

Anti-EGR1 antibody (282-433 aa) [8A6] (STJ98014)

STJ98014

GENERAL INFORMATION

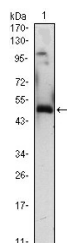
Product Type	Primary antibodies
Short Description	Mouse monoclonal antibody anti-Early growth response protein 1 (282-433 aa) is suitable for use in Western Blot and ELISA research applications.
Applications	WB/ELISA
Host/Source	Mouse
Reactivity	Human

PRODUCT PROPERTIES

Clonality	Monoclonal
Clone ID	8A6
Concentration	
Conjugation	Unconjugated
Purification	Affinity purification
Dilution Range	WB 1:500-1:2000 ELISA 1:10000
Formulation	Liquid in PBS containing 0.03% Sodium Azide, 0.5% BSA, 50% Glycerol.
Isotype	IgG1
Storage	Store at -20°C for up to 1 year from the date of receipt, and avoid repeat freeze-thaw cycles.
Instruction	

TARGET INFORMATION

Gene ID	1958
Gene Symbol	EGR1
Uniprot ID	EGR1_HUMAN
Immunogen	Purified recombinant fragment of human Egr-1 (aa282-433) expressed in E. Coli.
Immunogen Region	282-433 aa
Specificity	Egr-1 Monoclonal Antibody detects endogenous levels of Egr-1 protein.
Immunogen Sequence	



Western blot analysis using Egr-1 monoclonal antibody against EGR1-hlgGfC transfected HEK293 (1) cell lysate.