

Anti-PRKDC antibody [3H6] (STJ98003)

STJ98003

GENERAL INFORMATION

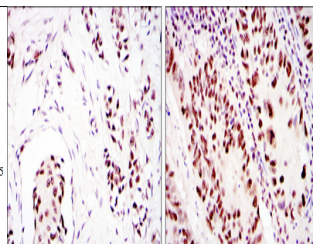
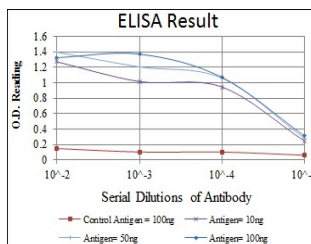
Product Type	Primary antibodies
Short Description	Mouse monoclonal antibody anti-DNA-dependent protein kinase catalytic subunit is suitable for use in Western Blot, Immunohistochemistry, Immunofluorescence and ELISA research applications.
Applications	WB/IHC/IF/ELISA
Host/Source	Mouse
Reactivity	Human

PRODUCT PROPERTIES

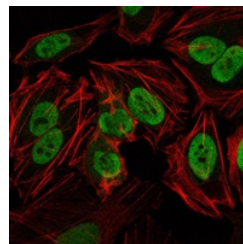
Clonality	Monoclonal
Clone ID	3H6
Concentration	
Conjugation	Unconjugated
Purification	Affinity purification
Dilution Range	WB 1:500-1:2000 IHC 1:200-1:1000 IF 1:200-1:1000 ELISA 1:10000
Formulation	Liquid in PBS containing 0.03% Sodium Azide, 0.5% BSA, 50% Glycerol.
Isotype	IgG1
Storage Instruction	Store at -20°C for up to 1 year from the date of receipt, and avoid repeat freeze-thaw cycles.

TARGET INFORMATION

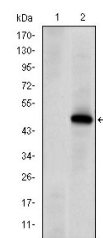
Gene ID	5591
Gene Symbol	PRKDC
Uniprot ID	PRKDC_HUMAN
Immunogen	Purified recombinant fragment of human DNA-PKCS expressed in E. Coli.
Immunogen Region	
Specificity	DNA-PKCS Monoclonal Antibody detects endogenous levels of DNA-PKCS protein.
Immunogen Sequence	



Immunohistochemistry analysis of paraffin-embedded breast cancer (left) and colon cancer (right) with DAB staining using DNA-PKCS monoclonal antibody.



Immunofluorescence analysis of HeLa cells using DNA-PKCS monoclonal antibody (green). Red: Actin filaments have been labeled with Alexa Fluor-555 phalloidin.



Western blot analysis using DNA-PKCS monoclonal antibody against HEK293 (1) and PRKDC-hlgGc transfected HEK293 (2) cell lysate.