

Anti-Pan-KRT5 antibody [7H8] (STJ97994)

STJ97994

GENERAL INFORMATION

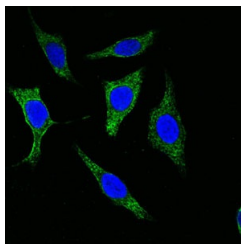
Product Type	Primary antibodies
Short Description	Mouse monoclonal antibody anti-Pan-Keratin, type II cytoskeletal 5 is suitable for use in Immunohistochemistry, Immunofluorescence and ELISA research applications.
Applications	IHC/IF/ELISA
Host/Source	Mouse
Reactivity	Human

PRODUCT PROPERTIES

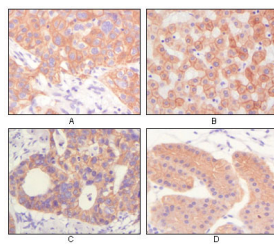
Clonality	Monoclonal
Clone ID	7H8
Concentration	
Conjugation	Unconjugated
Purification	Affinity purification
Dilution Range	IHC 1:200-1:1000 IF 1:200-1:1000 ELISA 1:10000
Formulation	Liquid in PBS containing 0.03% Sodium Azide, 0.5% BSA, 50% Glycerol.
Isotype	IgG1
Storage Instruction	Store at -20°C for up to 1 year from the date of receipt, and avoid repeat freeze-thaw cycles.

TARGET INFORMATION

Gene ID	3852
Gene Symbol	KRT5
Uniprot ID	K2C5_HUMAN
Immunogen	Purified recombinant fragment of Cytokeratin 5 expressed in E. Coli.
Immunogen Region	
Specificity	Cytokeratin (Pan) Monoclonal Antibody detects endogenous levels of Cytokeratin (Pan) protein.
Immunogen Sequence	



Confocal immunofluorescence analysis of methanol-fixed Eca-109 cells using Cytokeratin (Pan) monoclonal antibody (green), showing cytoplasmic localization. Blue: DRAQS fluorescent DNA dye.



Immunohistochemistry analysis of paraffin-embedded human lung squamous cell carcinoma (A), normal hepatocyte (B), colon adenocarcinoma, normal stomach tissue (D), showing cytoplasmic and membrane localization with DAB staining using Cytokeratin (Pan) Monoc.