

Anti-KRT8 antibody (391-483 aa) [8A5D12] (STJ97992)

STJ97992

GENERAL INFORMATION

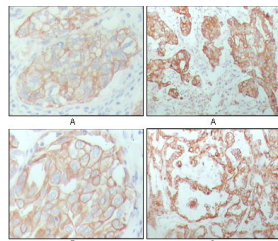
Product Type	Primary antibodies
Short Description	Mouse monoclonal antibody anti-Keratin, type II cytoskeletal 8 (391-483 aa) is suitable for use in Western Blot, Immunohistochemistry, Immunofluorescence and ELISA research applications.
Applications	WB/IHC/IF/ELISA
Host/Source	Mouse
Reactivity	Human

PRODUCT PROPERTIES

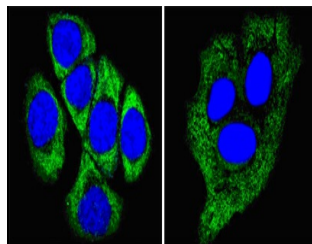
Clonality	Monoclonal
Clone ID	8A5D12
Concentration	
Conjugation	Unconjugated
Purification	Affinity purification
Dilution Range	WB 1:500-1:2000 IHC 1:200-1:1000 IF 1:200-1:1000 ELISA 1:10000
Formulation	Liquid in PBS containing 0.03% Sodium Azide, 0.5% BSA, 50% Glycerol.
Isotype	IgG1
Storage Instruction	Store at -20°C for up to 1 year from the date of receipt, and avoid repeat freeze-thaw cycles.

TARGET INFORMATION

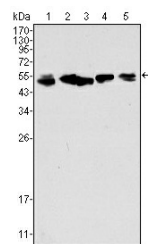
Gene ID	3856
Gene Symbol	KRT8
Uniprot ID	K2C8_HUMAN
Immunogen	Purified recombinant fragment of human Cytokeratin 8 (aa391-483) expressed in E. Coli.
Immunogen Region	391-483 aa
Specificity	Cytokeratin 8 Monoclonal Antibody detects endogenous levels of Cytokeratin 8 protein.
Immunogen Sequence	



Immunohistochemistry analysis of paraffin-embedded human breast carcinoma (A), lung cancer (B) and ovarian cancer tissue (C), showing membrane and cytoplasmic localization with DAB staining using Cytokeratin 8 monoclonal antibody.



Confocal immunofluorescence analysis of methanol-fixed ECA109 cells (left) and HepG2 cells (right) using Cytokeratin 8 monoclonal antibody (green), showing cytoplasmic localization. Blue: DRAQ5 fluorescent DNA dye.



Western blot analysis using Cytokeratin 8 monoclonal antibody against A549 (1), HeLa (2), MCF-7 (3), A431 (4) and HepG2 (5) cell lysate.

This product is suitable for in-vitro studies under the RESEARCH USE ONLY [RUO] licence. This product must not be used as for diagnostic or other medical purposes.
St John's Laboratory Ltd, Knowledge Dock Business Centre, University Way, London, E16 2RD | Tel: 0208 223 3081