

## Anti-KRT5 antibody [3E2F1] (STJ97989)

STJ97989

### GENERAL INFORMATION

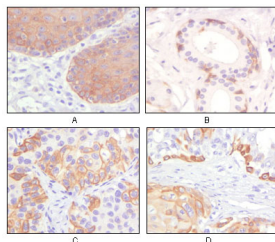
<b>Product Type</b>	Primary antibodies
<b>Short Description</b>	Mouse monoclonal antibody anti-Keratin, type II cytoskeletal 5 is suitable for use in Western Blot, Immunohistochemistry, Immunofluorescence and ELISA research applications.
<b>Applications</b>	WB/IHC/IF/ELISA
<b>Host/Source</b>	Mouse
<b>Reactivity</b>	Human

### PRODUCT PROPERTIES

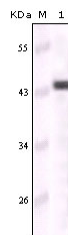
<b>Clonality</b>	Monoclonal
<b>Clone ID</b>	3E2F1
<b>Concentration</b>	
<b>Conjugation</b>	Unconjugated
<b>Purification</b>	Affinity purification
<b>Dilution Range</b>	WB 1:500-1:2000 IHC 1:200-1:1000 ELISA 1:10000 IF 1:50-200
<b>Formulation</b>	Liquid in PBS containing 0.03% Sodium Azide, 0.5% BSA, 50% Glycerol.
<b>Isotype</b>	IgG1
<b>Storage Instruction</b>	Store at -20°C for up to 1 year from the date of receipt, and avoid repeat freeze-thaw cycles.

### TARGET INFORMATION

<b>Gene ID</b>	3852
<b>Gene Symbol</b>	KRT5
<b>Uniprot ID</b>	K2C5_HUMAN
<b>Immunogen</b>	Purified recombinant fragment of Cytokeratin 5 expressed in E. Coli.
<b>Immunogen Region</b>	
<b>Specificity</b>	Cytokeratin 5 Monoclonal Antibody detects endogenous levels of Cytokeratin 5 protein.
<b>Immunogen Sequence</b>	



Immunohistochemistry analysis of paraffin-embedded human esophagus epithelium (A), salivary gland basal cell (B), lung squamous cell carcinoma (C), endometrium adenosquamous carcinoma (D), showing cytoplasmic and membrane localization with DAB staining.



Western blot analysis using Cytokeratin 5 monoclonal antibody against truncated CK5 recombinant protein.