

Anti-CRYAB antibody (1-175 aa) [1D11C6E6] (STJ97971)

STJ97971

GENERAL INFORMATION

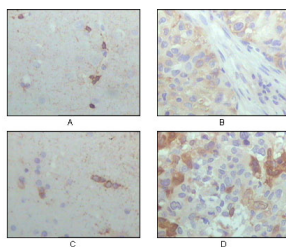
| | |
|--------------------------|--|
| Product Type | Primary antibodies |
| Short Description | Mouse monoclonal antibody anti-Alpha-crystallin B chain-crystallin (1-175 aa) is suitable for use in Western Blot, Immunohistochemistry, Immunofluorescence and ELISA research applications. |
| Applications | WB/IHC/IF/ELISA |
| Host/Source | Mouse |
| Reactivity | Human |

PRODUCT PROPERTIES

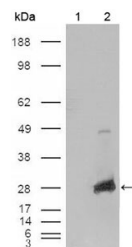
| | |
|-----------------------|--|
| Clonality | Monoclonal |
| Clone ID | 1D11C6E6 |
| Concentration | |
| Conjugation | Unconjugated |
| Purification | Affinity purification |
| Dilution Range | WB 1:500-1:2000 IHC 1:200-1:1000 ELISA 1:10000 IF 1:50-200 |
| Formulation | Liquid in PBS containing 0.03% Sodium Azide, 0.5% BSA, 50% Glycerol. |
| Isotype | IgG2a |
| Storage | Store at -20°C for up to 1 year from the date of receipt, and avoid repeat freeze-thaw cycles. |
| Instruction | |

TARGET INFORMATION

| | |
|---------------------------|---|
| Gene ID | 1410 |
| Gene Symbol | CRYAB |
| Uniprot ID | CRYAB_HUMAN |
| Immunogen | Purified recombinant fragment of Crystallin-Alpha B (aa1-175) expressed in E. Coli. |
| Immunogen Region | 1-175 aa |
| Specificity | Crystallin-Alpha B Monoclonal Antibody detects endogenous levels of Crystallin-Alpha B protein. |
| Immunogen Sequence | |



Immunohistochemistry analysis of paraffin-embedded human brain hippocampus (A), lung cancer (B), brain tumor (C), breast cancer (D) showing cytoplasmic localization with DAB staining using Crystallin-Alpha B monoclonal antibody.



Western blot analysis using Crystallin-Alpha B monoclonal antibody against HEK293T cells transfected with the pCMV6-ENTRY control (1) and pCMV6-ENTRY CRYAB cDNA (2).