

## Anti-CHEK1 antibody [2G1D5] (STJ97955)

STJ97955

### GENERAL INFORMATION

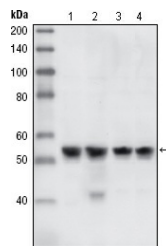
<b>Product Type</b>	Primary antibodies
<b>Short Description</b>	Mouse monoclonal antibody anti-Serine/threonine-protein kinase Chk1 is suitable for use in Western Blot and ELISA research applications.
<b>Applications</b>	WB/ELISA
<b>Host/Source</b>	Mouse
<b>Reactivity</b>	Human/Mouse

### PRODUCT PROPERTIES

<b>Clonality</b>	Monoclonal
<b>Clone ID</b>	2G1D5
<b>Concentration</b>	1 mg/mL
<b>Conjugation</b>	Unconjugated
<b>Purification</b>	Affinity purification
<b>Dilution Range</b>	WB 1:500-1:2000 ELISA 1:10000
<b>Formulation</b>	Liquid in PBS containing 0.03% Sodium Azide.
<b>Isotype</b>	IgG1
<b>Storage Instruction</b>	Store at -20°C for up to 1 year from the date of receipt, and avoid repeat freeze-thaw cycles.

### TARGET INFORMATION

<b>Gene ID</b>	1111
<b>Gene Symbol</b>	CHEK1
<b>Uniprot ID</b>	CHK1_HUMAN
<b>Immunogen</b>	Purified recombinant fragment of Chk1 expressed in E. Coli.
<b>Immunogen Region</b>	
<b>Specificity</b>	Chk1 Monoclonal Antibody detects endogenous levels of Chk1 protein.
<b>Immunogen Sequence</b>	



Western blot analysis using Chk1 monoclonal antibody against A431 (1), HeLa (2), NIH/3T3 (3) and K562 (4) cell lysate.