

Anti-CHIT1 antibody (22-137 aa) [1D9G2/1D9G4/2B4G3] (STJ97954)

STJ97954

GENERAL INFORMATION

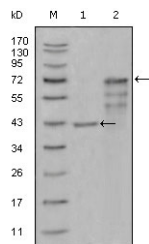
Product Type	Primary antibodies
Short Description	Mouse monoclonal antibody anti-Chitotriosidase-1 (22-137 aa) is suitable for use in Western Blot and ELISA research applications.
Applications	WB/ELISA
Host/Source	Mouse
Reactivity	Human

PRODUCT PROPERTIES

Clonality	Monoclonal
Clone ID	1D9G2/1D9G4/2B4G3
Concentration	
Conjugation	Unconjugated
Purification	Affinity purification
Dilution Range	WB 1:500-1:2000 ELISA 1:10000
Formulation	Liquid in PBS containing 0.03% Sodium Azide, 0.5% BSA, 50% Glycerol.
Isotype	IgG1
Storage Instruction	Store at -20°C for up to 1 year from the date of receipt, and avoid repeat freeze-thaw cycles.

TARGET INFORMATION

Gene ID	1118
Gene Symbol	CHIT1
Uniprot ID	CHIT1_HUMAN
Immunogen	Purified recombinant fragment of Chitotriosidase (aa22-137) expressed in E. Coli.
Immunogen Region	22-137 aa
Specificity	Chitotriosidase Monoclonal Antibody detects endogenous levels of Chitotriosidase protein.
Immunogen Sequence	



Western blot analysis using Chitotriosidase monoclonal antibody against truncated Trx-CHIT1 recombinant protein (1) and truncated CHIT1 (aa22-466) -hlgGfC transfected CHO-K1 cell lysate (2).

This product is suitable for in-vitro studies under the RESEARCH USE ONLY [RUO] licence. This product must not be used as for diagnostic or other medical purposes.
St John's Laboratory Ltd, Knowledge Dock Business Centre, University Way, London, E16 2RD | Tel: 0208 223 3081