

Anti-CER1 antibody [9D6] (STJ97951)

STJ97951

GENERAL INFORMATION

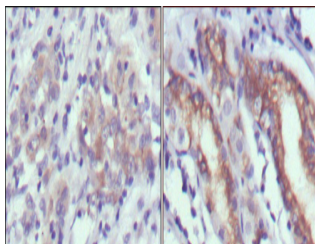
Product Type	Primary antibodies
Short Description	Mouse monoclonal antibody anti-Cerberus is suitable for use in Western Blot, Immunohistochemistry, Immunofluorescence and ELISA research applications.
Applications	WB/IHC/IF/ELISA
Host/Source	Mouse
Reactivity	Human

PRODUCT PROPERTIES

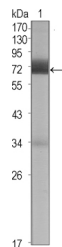
Clonality	Monoclonal
Clone ID	9D6
Concentration	
Conjugation	Unconjugated
Purification	Affinity purification
Dilution Range	WB 1:500-1:2000 IHC 1:200-1:1000 ELISA 1:10000 IF 1:50-200
Formulation	Liquid in PBS containing 0.03% Sodium Azide, 0.5% BSA, 50% Glycerol.
Isotype	IgG1
Storage Instruction	Store at -20°C for up to 1 year from the date of receipt, and avoid repeat freeze-thaw cycles.

TARGET INFORMATION

Gene ID	9350
Gene Symbol	CER1
Uniprot ID	CER1_HUMAN
Immunogen	Purified recombinant fragment of human Cerberus expressed in E. Coli.
Immunogen Region	
Specificity	Cerberus Monoclonal Antibody detects endogenous levels of Cerberus protein.
Immunogen Sequence	



Immunohistochemistry analysis of paraffin-embedded human gastric cancer (left) and normal gastric tissues (right) with DAB staining using Cerberus monoclonal antibody.



Western blot analysis using Cerberus monoclonal antibody against CER1 (aa18-267) -hlgGfC transfected HEK293 cell lysate (1).