

Anti-PECAM1 antibody [2F7B2] (STJ97920)

STJ97920

GENERAL INFORMATION

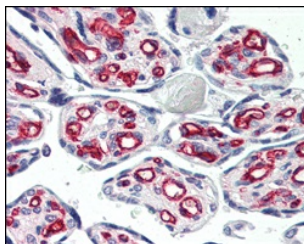
Product Type	Primary antibodies
Short Description	Mouse monoclonal antibody anti-Platelet endothelial cell adhesion molecule is suitable for use in Western Blot, Immunohistochemistry, Immunofluorescence and ELISA research applications.
Applications	WB/IHC/IF/ELISA
Host/Source	Mouse
Reactivity	Human/Rabbit

PRODUCT PROPERTIES

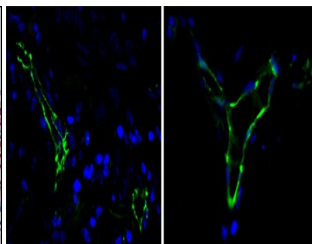
Clonality	Monoclonal
Clone ID	2F7B2
Concentration	
Conjugation	Unconjugated
Purification	Affinity purification
Dilution Range	WB 1:500-1:2000 IHC 1:200-1:1000 IF 1:200-1:1000 ELISA 1:10000
Formulation	Liquid in PBS containing 0.03% Sodium Azide, 0.5% BSA, 50% Glycerol.
Isotype	IgG1
Storage Instruction	Store at -20°C for up to 1 year from the date of receipt, and avoid repeat freeze-thaw cycles.

TARGET INFORMATION

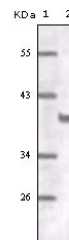
Gene ID	5175
Gene Symbol	PECAM1
Uniprot ID	PECA1_HUMAN
Immunogen	Purified recombinant fragment of human CD31 expressed in E. Coli.
Immunogen Region	
Specificity	CD31 Monoclonal Antibody detects endogenous levels of CD31 protein.
Immunogen Sequence	



Immunohistochemistry analysis of paraffin-embedded human placenta tissues with AEC staining using CD31 monoclonal antibody.



Immunofluorescence analysis of paraffin-embedded human lung cancer (left) and breast cancer (right) cells using CD31 monoclonal antibody (green). Blue: DAPI fluorescent DNA dye.



Western blot analysis using CD31 monoclonal antibody against truncated CD31 recombinant protein.

This product is suitable for in-vitro studies under the RESEARCH USE ONLY [RUO] licence. This product must not be used as for diagnostic or other medical purposes.
St John's Laboratory Ltd, Knowledge Dock Business Centre, University Way, London, E16 2RD | Tel: 0208 223 3081