

Anti-CBX1 antibody [5A3] (STJ97899)

STJ97899

GENERAL INFORMATION

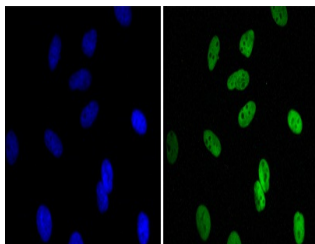
Product Type	Primary antibodies
Short Description	Mouse monoclonal antibody anti-Chromobox protein homolog 1 is suitable for use in Western Blot, Immunofluorescence, Flow Cytometry and ELISA research applications.
Applications	WB/IF/FC/ELISA
Host/Source	Mouse
Reactivity	Human/Monkey

PRODUCT PROPERTIES

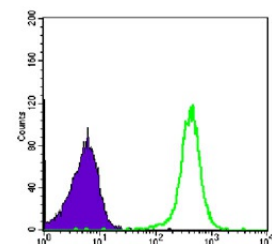
Clonality	Monoclonal
Clone ID	5A3
Concentration	
Conjugation	Unconjugated
Purification	Affinity purification
Dilution Range	WB 1:500-1:2000 IF 1:200-1:1000 FC 1:200-1:400 ELISA 1:10000
Formulation	Liquid in PBS containing 0.03% Sodium Azide, 0.5% BSA, 50% Glycerol.
Isotype	IgG1
Storage Instruction	Store at -20°C for up to 1 year from the date of receipt, and avoid repeat freeze-thaw cycles.

TARGET INFORMATION

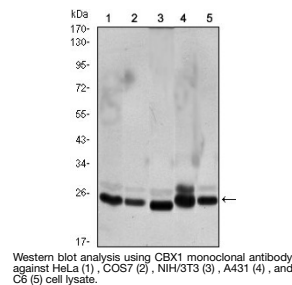
Gene ID	10951
Gene Symbol	CBX1
Uniprot ID	CBX1_HUMAN
Immunogen	Purified recombinant fragment of human CBX1 expressed in E. Coli.
Immunogen Region	
Specificity	CBX1 Monoclonal Antibody detects endogenous levels of CBX1 protein.
Immunogen Sequence	



Immunofluorescence analysis of HeLa cells using CBX1 monoclonal antibody (green). Blue: DRAQ5 fluorescent DNA dye.



Flow cytometric analysis of COS7 cells using CBX1 monoclonal antibody (green) and negative control (purple).



Western blot analysis using CBX1 monoclonal antibody against HeLa (1), COS7 (2), NIH/3T3 (3), A431 (4), and C6 (5) cell lysate.

This product is suitable for in-vitro studies under the RESEARCH USE ONLY [RUO] licence. This product must not be used as for diagnostic or other medical purposes.
St John's Laboratory Ltd, Knowledge Dock Business Centre, University Way, London, E16 2RD | Tel: 0208 223 3081