

## Anti-ABL1 antibody (577-650 aa) [7B11D6] (STJ97889)

STJ97889

### GENERAL INFORMATION

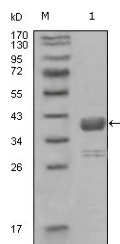
|                          |   |
|--------------------------|---|
| <b>Product Type</b>      | Primary antibodies  |
| <b>Short Description</b> | Mouse monoclonal antibody anti-Tyrosine-protein kinase ABL1 (577-650 aa) is suitable for use in Western Blot and ELISA research applications. |
| <b>Applications</b>      | WB/ELISA  |
| <b>Host/Source</b>       | Mouse   |
| <b>Reactivity</b>        | Human   |

### PRODUCT PROPERTIES

|                            |  |
|----------------------------|--|
| <b>Clonality</b>           | Monoclonal   |
| <b>Clone ID</b>            | 7B11D6   |
| <b>Concentration</b>       |  |
| <b>Conjugation</b>         | Unconjugated   |
| <b>Purification</b>        | Affinity purification  |
| <b>Dilution Range</b>      | WB 1:500-1:2000<br>ELISA 1:10000   |
| <b>Formulation</b>         | Liquid in PBS containing 0.03% Sodium Azide, 0.5% BSA, 50% Glycerol.                           |
| <b>Isotype</b>             | IgG1   |
| <b>Storage Instruction</b> | Store at -20°C for up to 1 year from the date of receipt, and avoid repeat freeze-thaw cycles. |

### TARGET INFORMATION

|                    |  |
|--------------------|--|
| <b>Gene ID</b>     | 25   |
| <b>Gene Symbol</b> | ABL1   |
| <b>Uniprot ID</b>  | ABL1_HUMAN   |
| <b>Immunogen</b>   | Purified recombinant fragment of c-Abl (aa577-650) expressed in E. Coli. |
| <b>Immunogen</b>   | 577-650 aa   |
| <b>Region</b>      |  |
| <b>Specificity</b> | c-Abl Monoclonal Antibody detects endogenous levels of c-Abl protein.    |
| <b>Immunogen</b>   |  |
| <b>Sequence</b>    |  |



Western blot analysis using c-Abl monoclonal antibody against truncated GST-ABL1 recombinant protein (1).

This product is suitable for in-vitro studies under the RESEARCH USE ONLY [RUO] licence. This product must not be used as for diagnostic or other medical purposes.  
St John's Laboratory Ltd, Knowledge Dock Business Centre, University Way, London, E16 2RD | Tel: 0208 223 3081