

Anti-BMI1 antibody [3E3] (STJ97874)

STJ97874

GENERAL INFORMATION

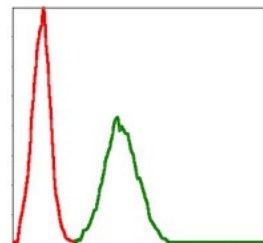
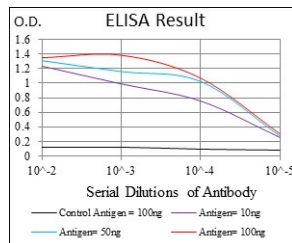
Product Type	Primary antibodies
Short Description	Mouse monoclonal antibody anti-Polycomb complex protein BMI-1 is suitable for use in Western Blot, Immunohistochemistry, Immunofluorescence, Flow Cytometry and ELISA research applications.
Applications	WB/IHC/IF/FC/ELISA
Host/Source	Mouse
Reactivity	Human

PRODUCT PROPERTIES

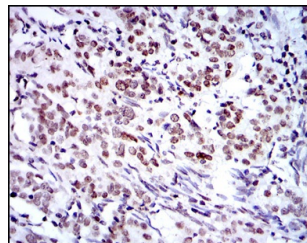
Clonality	Monoclonal
Clone ID	3E3
Concentration	
Conjugation	Unconjugated
Purification	Affinity purification
Dilution	WB 1:500-1:2000
Range	IHC 1:200-1:1000 IF 1:200-1:1000 FC 1:200-1:400 ELISA 1:10000
Formulation	Liquid in PBS containing 0.03% Sodium Azide, 0.5% BSA, 50% Glycerol.
Isotype	IgG1
Storage	Store at -20°C for up to 1 year from the date of receipt, and avoid repeat freeze-thaw cycles.
Instruction	

TARGET INFORMATION

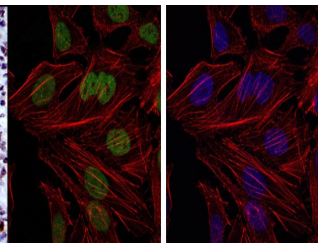
Gene ID	100532731/648
Gene Symbol	BMI1
Uniprot ID	BMI1_HUMAN
Immunogen	Purified recombinant fragment of human Bmi-1 expressed in E. Coli.
Immunogen Region	
Specificity	Bmi-1 Monoclonal Antibody detects endogenous levels of Bmi-1 protein.
Immunogen Sequence	



Flow cytometric analysis of NIH/3T3 cells using Bmi-1 monoclonal antibody (green) and negative control (red).



Immunohistochemistry analysis of paraffin-embedded cervical cancer tissues with DAB staining using Bmi-1 monoclonal antibody.



Immunofluorescence analysis of HeLa cells using Bmi-1 monoclonal antibody (green). Blue: DAPI fluorescent DNA dye. Red: Actin filaments have been labeled with Alexa Fluor-555 phalloidin.

This product is suitable for in-vitro studies under the RESEARCH USE ONLY [RUO] licence. This product must not be used as for diagnostic or other medical purposes.
St John's Laboratory Ltd, Knowledge Dock Business Centre, University Way, London, E16 2RD | Tel: 0208 223 3081