

Anti-MCM2 antibody [2B3] (STJ97871)

STJ97871

GENERAL INFORMATION

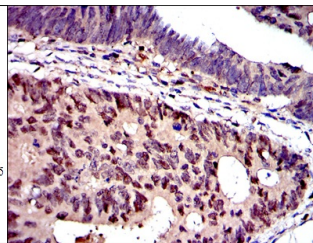
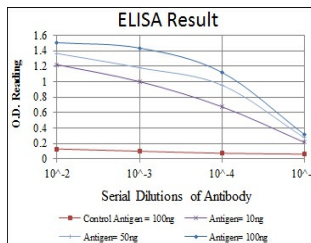
Product Type	Primary antibodies
Short Description	Mouse monoclonal antibody anti-DNA replication licensing factor MCM2 is suitable for use in Western Blot, Immunohistochemistry, Immunofluorescence, Flow Cytometry and ELISA research applications.
Applications	WB/IHC/IF/FC/ELISA
Host/Source	Mouse
Reactivity	Human/Mouse/Rat/Monkey

PRODUCT PROPERTIES

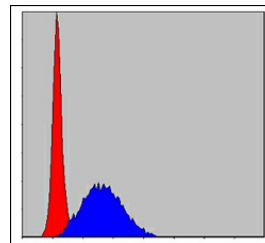
Clonality	Monoclonal
Clone ID	2B3
Concentration	
Conjugation	Unconjugated
Purification	Affinity purification
Dilution Range	WB 1:500-1:2000 IHC 1:200-1:1000 FC 1:200-1:400 ELISA 1:10000 IF 1:50-200
Formulation	Liquid in PBS containing 0.03% Sodium Azide, 0.5% BSA, 50% Glycerol.
Isotype	IgG1
Storage	Store at -20°C for up to 1 year from the date of receipt, and avoid repeat freeze-thaw cycles.
Instruction	

TARGET INFORMATION

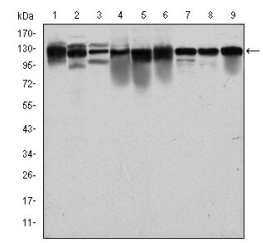
Gene ID	4171
Gene Symbol	MCM2
Uniprot ID	MCM2_HUMAN
Immunogen	Purified recombinant fragment of human BM28 expressed in E. Coli.
Immunogen Region	
Specificity	BM28 Monoclonal Antibody detects endogenous levels of BM28 protein.
Immunogen Sequence	



Immunohistochemistry analysis of paraffin-embedded colon cancer tissues with DAB staining using BM28 monoclonal antibody.



Flow cytometric analysis of HeLa cells using BM28 monoclonal antibody (blue) and negative control (red).



Western blot analysis using BM28 monoclonal antibody against PC-12 (1), Cos7 (2), NIH/3T3 (3), HepG2 (4), HEK293 (5), K562 (6), Jurkat (7), HeLa (8) and MCF-7 (9) cell lysate.

This product is suitable for in-vitro studies under the RESEARCH USE ONLY [RUO] licence. This product must not be used as for diagnostic or other medical purposes.
St John's Laboratory Ltd, Knowledge Dock Business Centre, University Way, London, E16 2RD | Tel: 0208 223 3081