

Anti-BDH1 antibody [1A5] (STJ97861)

STJ97861

GENERAL INFORMATION

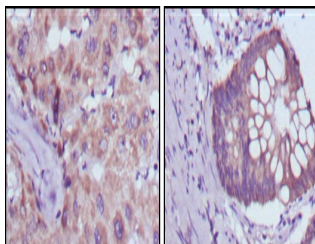
Product Type	Primary antibodies
Short Description	Mouse monoclonal antibody anti-D-beta-hydroxybutyrate dehydrogenase, mitochondrial is suitable for use in Western Blot, Immunohistochemistry, Immunofluorescence and ELISA research applications.
Applications	WB/IHC/IF/ELISA
Host/Source	Mouse
Reactivity	Human/Mouse

PRODUCT PROPERTIES

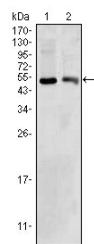
Clonality	Monoclonal
Clone ID	1A5
Concentration	
Conjugation	Unconjugated
Purification	Affinity purification
Dilution	WB 1:500-1:2000
Range	IHC 1:200-1:1000 ELISA 1:10000 IF 1:50-200
Formulation	Liquid in PBS containing 0.03% Sodium Azide, 0.5% BSA, 50% Glycerol.
Isotype	IgG1
Storage Instruction	Store at -20°C for up to 1 year from the date of receipt, and avoid repeat freeze-thaw cycles.

TARGET INFORMATION

Gene ID	622
Gene Symbol	BDH1
Uniprot ID	BDH_HUMAN
Immunogen	Purified recombinant fragment of human BDH1 expressed in E. Coli.
Immunogen Region	
Specificity	BDH1 Monoclonal Antibody detects endogenous levels of BDH1 protein.
Immunogen Sequence	



Immunohistochemistry analysis of paraffin-embedded human liver cancer (left) and colorectal cancer tissues (right) with DAB staining using BDH1 monoclonal antibody.



Western blot analysis using BDH1 monoclonal antibody against HepG2 (1) and NIH/3T3 (2) cell lysate.