

Anti-APP antibody [1B11F3] (STJ97844)

STJ97844

GENERAL INFORMATION

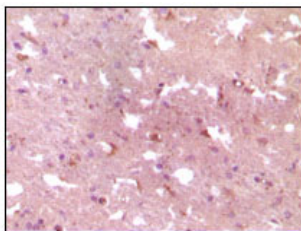
Product Type	Primary antibodies
Short Description	Mouse monoclonal antibody anti-Amyloid-beta precursor protein precursor protein is suitable for use in Western Blot, Immunohistochemistry, Immunofluorescence and ELISA research applications.
Applications	WB/IHC/IF/ELISA
Host/Source	Mouse
Reactivity	Human

PRODUCT PROPERTIES

Clonality	Monoclonal
Clone ID	1B11F3
Concentration	
Conjugation	Unconjugated
Purification	Affinity purification
Dilution Range	WB 1:500-1:2000 IHC 1:200-1:1000 ELISA 1:10000 IF 1:50-200
Formulation	Liquid in PBS containing 0.03% Sodium Azide, 0.5% BSA, 50% Glycerol.
Isotype	IgG2a
Storage Instruction	Store at -20°C for up to 1 year from the date of receipt, and avoid repeat freeze-thaw cycles.

TARGET INFORMATION

Gene ID	351
Gene Symbol	APP
Uniprot ID	A4_HUMAN
Immunogen	Purified recombinant fragment of APP expressed in E. Coli.
Immunogen Region	
Specificity	APP Monoclonal Antibody detects endogenous levels of APP protein.
Immunogen Sequence	



Immunohistochemistry analysis of paraffin-embedded human Alzheimer brain tissue, showing cytoplasmic localization with DAB staining using APP monoclonal antibody.



Western blot analysis using APP monoclonal antibody against truncated APP recombinant protein.