

## Anti-LPA antibody (4330-4521 aa) [8F6A9/8H5C5] (STJ97831)

### GENERAL INFORMATION

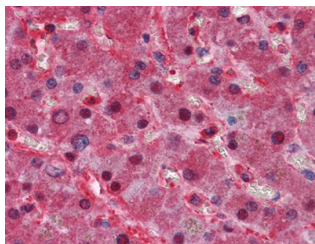
<b>Product Type</b>	Primary antibodies
<b>Short Description</b>	Mouse monoclonal antibody anti-Apolipoproteina (4330-4521 aa) is suitable for use in Western Blot, Immunohistochemistry, Immunofluorescence and ELISA research applications.
<b>Applications</b>	WB/IHC/IF/ELISA
<b>Host/Source</b>	Mouse
<b>Reactivity</b>	Human

### PRODUCT PROPERTIES

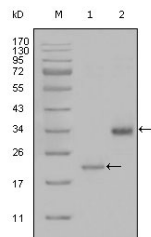
<b>Clonality</b>	Monoclonal
<b>Clone ID</b>	8F6A9/8H5C5
<b>Concentration</b>	
<b>Conjugation</b>	Unconjugated
<b>Purification</b>	Affinity purification
<b>Dilution Range</b>	WB 1:500-1:2000 IHC 1:200-1:1000 ELISA 1:10000 IF 1:50-200
<b>Formulation</b>	Liquid in PBS containing 0.03% Sodium Azide, 0.5% BSA, 50% Glycerol.
<b>Isotype</b>	IgG1
<b>Storage Instruction</b>	Store at -20°C for up to 1 year from the date of receipt, and avoid repeat freeze-thaw cycles.

### TARGET INFORMATION

<b>Gene ID</b>	4018
<b>Gene Symbol</b>	LPA
<b>Uniprot ID</b>	APOA_HUMAN
<b>Immunogen</b>	Purified recombinant fragment of ApoA (4330-4521) expressed in E. Coli.
<b>Immunogen Region</b>	4330-4521 aa
<b>Specificity</b>	ApoA Monoclonal Antibody detects endogenous levels of ApoA protein.
<b>Immunogen Sequence</b>	



Immunohistochemistry analysis of paraffin-embedded human Liver tissues with AEC staining using ApoA monoclonal antibody.



Western blot analysis using ApoA monoclonal antibody against truncated LPA-His recombinant protein (1) and truncated Trx-LPA (aa4330-4521) recombinant protein (2).