

## Anti-ALDH1A1 antibody [5A11] (STJ97824)

STJ97824

### GENERAL INFORMATION

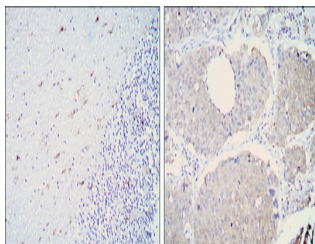
<b>Product Type</b>	Primary antibodies
<b>Short Description</b>	Mouse monoclonal antibody anti-Aldehyde dehydrogenase 1A1 is suitable for use in Western Blot, Immunohistochemistry, Immunofluorescence and ELISA research applications.
<b>Applications</b>	WB/IHC/IF/ELISA
<b>Host/Source</b>	Mouse
<b>Reactivity</b>	Human

### PRODUCT PROPERTIES

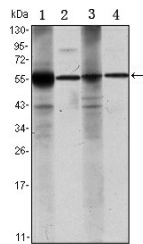
<b>Clonality</b>	Monoclonal
<b>Clone ID</b>	5A11
<b>Concentration</b>	
<b>Conjugation</b>	Unconjugated
<b>Purification</b>	Affinity purification
<b>Dilution Range</b>	WB 1:500-1:2000 IHC 1:200-1:1000 ELISA 1:10000 IF 1:50-200
<b>Formulation</b>	Liquid in PBS containing 0.03% Sodium Azide, 0.5% BSA, 50% Glycerol.
<b>Isotype</b>	IgG1
<b>Storage Instruction</b>	Store at -20°C for up to 1 year from the date of receipt, and avoid repeat freeze-thaw cycles.

### TARGET INFORMATION

<b>Gene ID</b>	216
<b>Gene Symbol</b>	ALDH1A1
<b>Uniprot ID</b>	AL1A1_HUMAN
<b>Immunogen</b>	Purified recombinant fragment of human ALDH1A1 expressed in E. Coli.
<b>Immunogen Region</b>	
<b>Specificity</b>	ALDH1A1 Monoclonal Antibody detects endogenous levels of ALDH1A1 protein.
<b>Immunogen Sequence</b>	



Immunohistochemistry analysis of paraffin-embedded cerebellum tissues (left) and lung cancer (right) with DAB staining using ALDH1A1 monoclonal antibody.



Western blot analysis using ALDH1A1 monoclonal antibody against Raji (1), Jurkat (2), THP-1 (3) and K562 (4) cell lysate.