

Anti-ACTA2 antibody [4A4] (STJ97813)

STJ97813

GENERAL INFORMATION

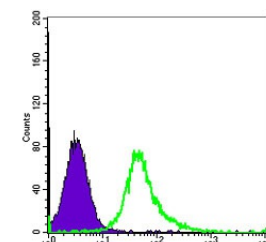
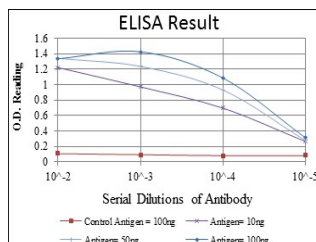
Product Type	Primary antibodies
Short Description	Mouse monoclonal antibody anti-Actin, aortic smooth muscle is suitable for use in Western Blot, Immunohistochemistry, Immunofluorescence, Flow Cytometry and ELISA research applications.
Applications	WB/IHC/IF/FC/ELISA
Host/Source	Mouse
Reactivity	Human/Mouse/Rat/Monkey

PRODUCT PROPERTIES

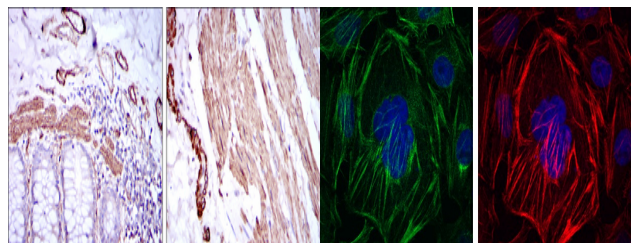
Clonality	Monoclonal
Clone ID	4A4
Concentration	
Conjugation	Unconjugated
Purification	Affinity purification
Dilution Range	WB 1:500-1:2000 IHC 1:200-1:1000 IF 1:200-1:1000 FC 1:200-1:400 ELISA 1:10000
Formulation	Liquid in PBS containing 0.03% Sodium Azide, 0.5% BSA, 50% Glycerol.
Isotype	IgG1
Storage	Store at -20°C for up to 1 year from the date of receipt, and avoid repeat freeze-thaw cycles.
Instruction	

TARGET INFORMATION

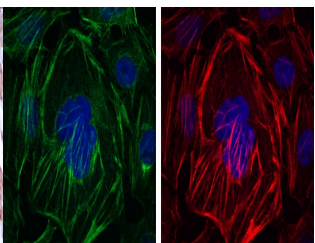
Gene ID	59
Gene Symbol	ACTA2
Uniprot ID	ACTA_HUMAN
Immunogen	Synthesized peptide of human ACTA2.
Immunogen Region	
Specificity	ACTA2 Monoclonal Antibody detects endogenous levels of ACTA2 protein.
Immunogen Sequence	



Flow cytometric analysis of HeLa cells using ACTA2 monoclonal antibody (green) and negative control (purple).



Immunohistochemistry analysis of paraffin-embedded human duodenum tissues (left) and human esophagus tissues (right) with DAB staining using ACTA2 monoclonal antibody.



Immunofluorescence analysis of HepG2 cells using ACTA2 monoclonal antibody (green). Red: Actin filaments have been labeled with Alexa Fluor-555 phalloidin. Blue: DAPI fluorescent DNA dye.

This product is suitable for in-vitro studies under the RESEARCH USE ONLY [RUO] licence. This product must not be used as for diagnostic or other medical purposes.
St John's Laboratory Ltd, Knowledge Dock Business Centre, University Way, London, E16 2RD | Tel: 0208 223 3081