

Anti-SERPINA1 antibody [2B12] (STJ97807)

STJ97807

GENERAL INFORMATION

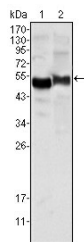
Product Type	Primary antibodies
Short Description	Mouse monoclonal antibody anti-Alpha-1-antitrypsin is suitable for use in Western Blot and ELISA research applications.
Applications	WB/ELISA
Host/Source	Mouse
Reactivity	Human/Mouse

PRODUCT PROPERTIES

Clonality	Monoclonal
Clone ID	2B12
Concentration	
Conjugation	Unconjugated
Purification	Affinity purification
Dilution Range	WB 1:500-1:2000 ELISA 1:10000
Formulation	Liquid in PBS containing 0.03% Sodium Azide, 0.5% BSA, 50% Glycerol.
Isotype	IgG1
Storage Instruction	Store at -20°C for up to 1 year from the date of receipt, and avoid repeat freeze-thaw cycles.

TARGET INFORMATION

Gene ID	5265
Gene Symbol	SERPINA1
Uniprot ID	A1AT_HUMAN
Immunogen	Purified recombinant fragment of human the amino acidT expressed in E. Coli.
Immunogen Region	
Specificity	AAT Monoclonal Antibody detects endogenous levels of AAT protein.
Immunogen Sequence	



Western blot analysis using AAT monoclonal antibody against human plasma (1) and NIH/3T3 cell lysate (2).

This product is suitable for in-vitro studies under the RESEARCH USE ONLY [RUO] licence. This product must not be used as for diagnostic or other medical purposes.
St John's Laboratory Ltd, Knowledge Dock Business Centre, University Way, London, E16 2RD | Tel: 0208 223 3081