

## Anti-Acetyl-E2F1-Lys120 antibody (100-170 aa) (STJ97800)

STJ97800

### GENERAL INFORMATION

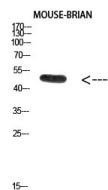
<b>Product Type</b>	Primary antibodies
<b>Short Description</b>	Rabbit polyclonal antibody anti-Acetyl-Transcription factor E2F1-Lys120 (100-170 aa) is suitable for use in Western Blot and ELISA research applications.
<b>Applications</b>	WB/ELISA
<b>Host/Source</b>	Rabbit
<b>Reactivity</b>	Human/Mouse/Rat

### PRODUCT PROPERTIES

<b>Clonality</b>	Polyclonal
<b>Clone ID</b>	
<b>Concentration</b>	1 mg/mL
<b>Conjugation</b>	Unconjugated
<b>Purification</b>	The antibody was affinity-purified from rabbit serum by affinity-chromatography using specific immunogen.
<b>Dilution Range</b>	WB 1:500-10000 ELISA 1:10000
<b>Formulation</b>	Liquid in PBS pH7.4, 0.02% Sodium Azide and 50% Glycerol.
<b>Isotype</b>	IgG
<b>Storage</b>	Store at -20°C for up to 1 year from the date of receipt, and avoid repeat freeze-thaw cycles.
<b>Instruction</b>	

### TARGET INFORMATION

<b>Gene ID</b>	1869
<b>Gene Symbol</b>	E2F1
<b>Uniprot ID</b>	E2F1_HUMAN
<b>Immunogen</b>	Synthesized acetyl-peptide from the human protein at the amino acid range 100-170
<b>Immunogen Region</b>	100-170 aa
<b>Specificity</b>	This antibody detects endogenous levels of E2F-1 at Human:K120;Mouse:K115;Rat:K118, It doesn't react with total protein.
<b>Immunogen Sequence</b>	



Western blot analysis of MOUSE-BRIAN cells using Antibody diluted at 2000. Secondary antibody was diluted at 1:20000

This product is suitable for in-vitro studies under the RESEARCH USE ONLY [RUO] licence. This product must not be used as for diagnostic or other medical purposes.  
St John's Laboratory Ltd, Knowledge Dock Business Centre, University Way, London, E16 2RD | Tel: 0208 223 3081