

Anti-DDIT3 antibody (10-90 aa) [2B1] (STJ97774)

STJ97774

GENERAL INFORMATION

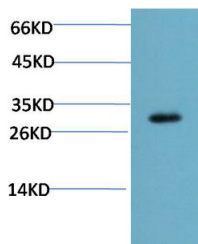
Product Type	Primary antibodies
Short Description	Mouse monoclonal antibody anti-DNA damage-inducible transcript 3 protein (10-90 aa) is suitable for use in Western Blot, Immunofluorescence and Immunohistochemistry research applications.
Applications	WB/IF/IHC
Host/Source	Mouse
Reactivity	Human/Rat/Mouse

PRODUCT PROPERTIES

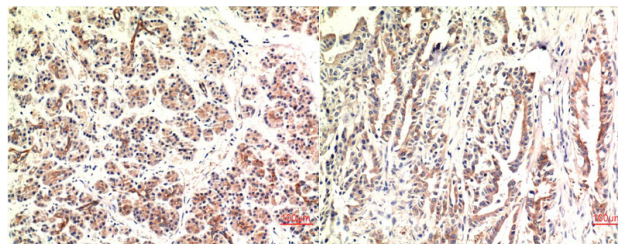
Clonality	Monoclonal
Clone ID	2B1
Concentration	1 mg/mL
Conjugation	Unconjugated
Purification	The antibody was affinity-purified from mouse ascites by affinity-chromatography using specific immunogen.
Dilution Range	WB 1:1000-2000 IHC 1:100-200 IF 1:200
Formulation	Liquid in PBS containing 50% Glycerol, 0.5% BSA and 0.02% Sodium Azide.
Isotype	IgG1
Storage	Store at -20°C for up to 1 year from the date of receipt, and avoid repeat freeze-thaw cycles.
Instruction	

TARGET INFORMATION

Gene ID	1649
Gene Symbol	DDIT3
Uniprot ID	DDIT3_HUMAN
Immunogen	Synthetic peptide of CHOP at the amino acid range of 10-90
Immunogen Region	10-90 aa
Specificity	CHOP protein detects endogenous levels of DDIT3
Immunogen Sequence	

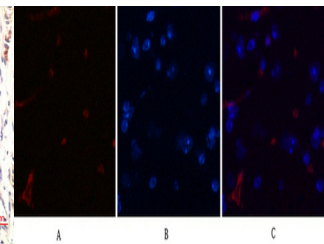


Western blot analysis of Mouse Liver Tissue Lysate using CHOP Mouse mAb diluted at 1:2000.



Immunohistochemical analysis of paraffin-embedded Human Pancreas Carcinoma Tissue using CHOP Mouse mAb diluted at 1:200.

Immunohistochemical analysis of paraffin-embedded Human Stomach Carcinoma Tissue using CHOP Mouse mAb diluted at 1:200.



Immunofluorescence analysis of Mouse-brain tissue. 1. CHOP Mouse monoclonal antibody (2B1) (red) was diluted at 1:200 (4°C, overnight). 2. Cy3 labeled Secondary antibody was diluted at 1:300 (room temperature, 50min). 3. Picture B: DAPI (blue) 10min. Picture A: Target. Picture B: DAPI. Picture C: merge of A+B

This product is suitable for in-vitro studies under the RESEARCH USE ONLY [RUO] licence. This product must not be used as for diagnostic or other medical purposes.
St John's Laboratory Ltd, Knowledge Dock Business Centre, University Way, London, E16 2RD | Tel: 0208 223 3081