

## Anti-CCNB1 antibody (60-140 aa) [5C1] (STJ97767)

STJ97767

### GENERAL INFORMATION

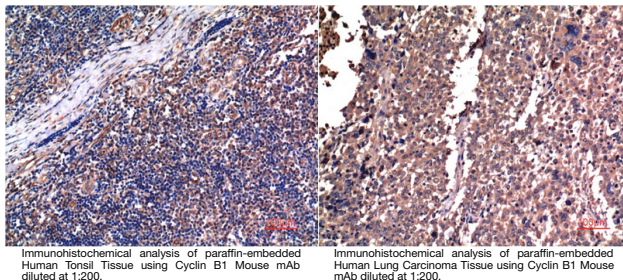
<b>Product Type</b>	Primary antibodies
<b>Short Description</b>	Mouse monoclonal antibody anti-G2/mitotic-specific cyclin-B1 (60-140 aa) is suitable for use in Immunohistochemistry and Immunofluorescence research applications.
<b>Applications</b>	IHC/IF
<b>Host/Source</b>	Mouse
<b>Reactivity</b>	Human/Rat/Mouse

### PRODUCT PROPERTIES

<b>Clonality</b>	Monoclonal
<b>Clone ID</b>	5C1
<b>Concentration</b>	1 mg/mL
<b>Conjugation</b>	Unconjugated
<b>Purification</b>	The antibody was affinity-purified from mouse ascites by affinity-chromatography using specific immunogen.
<b>Dilution Range</b>	IHC 1:100-200 IF 1:50-200
<b>Formulation</b>	Liquid in PBS containing 50% Glycerol, 0.5% BSA and 0.02% Sodium Azide.
<b>Isotype</b>	IgG1
<b>Storage</b>	Store at -20°C for up to 1 year from the date of receipt, and avoid repeat freeze-thaw cycles.
<b>Instruction</b>	

### TARGET INFORMATION

<b>Gene ID</b>	891
<b>Gene Symbol</b>	CCNB1
<b>Uniprot ID</b>	CCNB1_HUMAN
<b>Immunogen</b>	Synthetic peptide of Cyclin B1 at the amino acid range of 60-140
<b>Immunogen Region</b>	60-140 aa
<b>Specificity</b>	Cyclin B1 protein detects endogenous levels of CCNB1
<b>Immunogen Sequence</b>	



This product is suitable for in-vitro studies under the RESEARCH USE ONLY [RUO] licence. This product must not be used as for diagnostic or other medical purposes.  
St John's Laboratory Ltd, Knowledge Dock Business Centre, University Way, London, E16 2RD | Tel: 0208 223 3081