

Anti-TUBG1 antibody [6C12] (STJ97759)

STJ97759

GENERAL INFORMATION

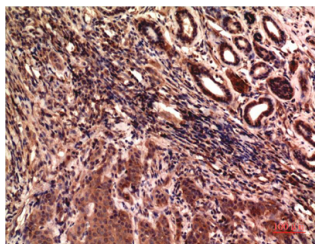
Product Type	Primary antibodies
Short Description	Mouse monoclonal antibody anti-Tubulin gamma-1 chain is suitable for use in Western Blot, Immunohistochemistry and Immunofluorescence research applications.
Applications	WB/IHC/IF
Host/Source	Mouse
Reactivity	Human/Rat/Mouse

PRODUCT PROPERTIES

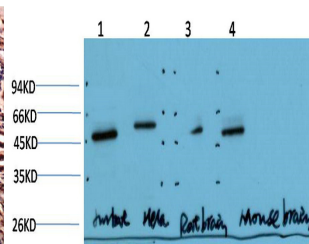
Clonality	Monoclonal
Clone ID	6C12
Concentration	1 mg/mL
Conjugation	Unconjugated
Purification	The antibody was affinity-purified from mouse ascites by affinity-chromatography using specific immunogen.
Dilution Range	WB 1:1000-2000 IHC 1:100-200 IF 1:50-200
Formulation	Liquid in PBS containing 50% Glycerol, 0.5% BSA and 0.02% Sodium Azide.
Isotype	IgG1
Storage Instruction	Store at -20°C for up to 1 year from the date of receipt, and avoid repeat freeze-thaw cycles.

TARGET INFORMATION

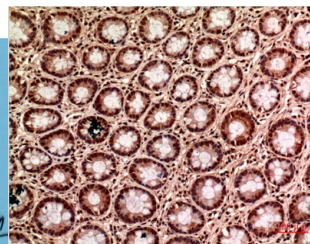
Gene ID	7283
Gene Symbol	TUBG1
Uniprot ID	TBG1_HUMAN
Immunogen	Synthetic Peptide of Gamma Tubulin
Immunogen Region	
Specificity	Gamma Tubulin protein detects endogenous levels of TUBG1
Immunogen Sequence	



Immunohistochemical analysis of paraffin-embedded Human Breast Carcinoma Tissue using Gamma Tubulin Mouse mAb diluted at 1:200.



Western blot analysis of paraffin-embedded Jurkat/Hela/Mouse-brain/Rat-brain using Gamma Tubulin Mouse mAb diluted at 1:1000.



Immunohistochemical analysis of paraffin-embedded Human Colon Carcinoma Tissue using Gamma Tubulin Mouse mAb diluted at 1:200.

This product is suitable for in-vitro studies under the RESEARCH USE ONLY [RUO] licence. This product must not be used as for diagnostic or other medical purposes.
St John's Laboratory Ltd, Knowledge Dock Business Centre, University Way, London, E16 2RD | Tel: 0208 223 3081