

Anti-Luciferase antibody [6B8] (STJ97752)

STJ97752

GENERAL INFORMATION

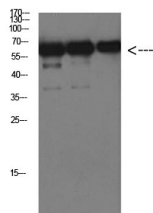
Product Type	Primary antibodies
Short Description	Mouse monoclonal antibody anti-Luciferin 4-monooxygenase is suitable for use in Immunofluorescence and Western Blot research applications.
Applications	IF/WB
Host/Source	Mouse
Reactivity	Firefly

PRODUCT PROPERTIES

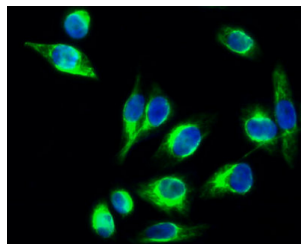
Clonality	Monoclonal
Clone ID	6B8
Concentration	1 mg/mL
Conjugation	Unconjugated
Purification	The antibody was affinity-purified from mouse ascites by affinity-chromatography using specific immunogen.
Dilution Range	IF 1:50-200 WB 1:1000-2000
Formulation	Liquid in PBS containing 50% Glycerol, 0.5% BSA and 0.02% Sodium Azide.
Isotype	IgG1
Storage Instruction	Store at -20°C for up to 1 year from the date of receipt, and avoid repeat freeze-thaw cycles.

TARGET INFORMATION

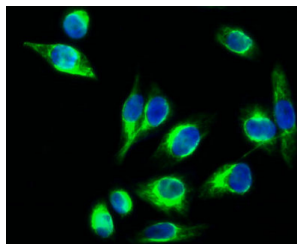
Gene ID	
Gene Symbol	
Uniprot ID	
Immunogen	Recombinant Protein of Luciferase of Luciferase
Immunogen Region	
Specificity	Luciferase protein detects endogenous levels of Luciferase
Immunogen Sequence	



Western blot analysis of over-expressed Luciferase protein using antibody diluted at 1:1000



Immunofluorescence analysis of HepG2 cells, Antibody diluted at 1:50. The picture on the right is blocked with the synthesized peptide.



Immunofluorescence analysis of HEK293T cells transfected with Luciferase. 1. Luciferase Mouse monoclonal antibody (6B8) (green) was diluted at 1:200 (4°C, overnight). 2. Dylight 488 labeled Secondary antibody was diluted at 1:300 room temperature, 30min. DAPI (blue) 10min.

This product is suitable for in-vitro studies under the RESEARCH USE ONLY [RUO] licence. This product must not be used as for diagnostic or other medical purposes.
St John's Laboratory Ltd, Knowledge Dock Business Centre, University Way, London, E16 2RD | Tel: 0208 223 3081