

Anti-TUBE1 antibody [3G1] (STJ97751)

STJ97751

GENERAL INFORMATION

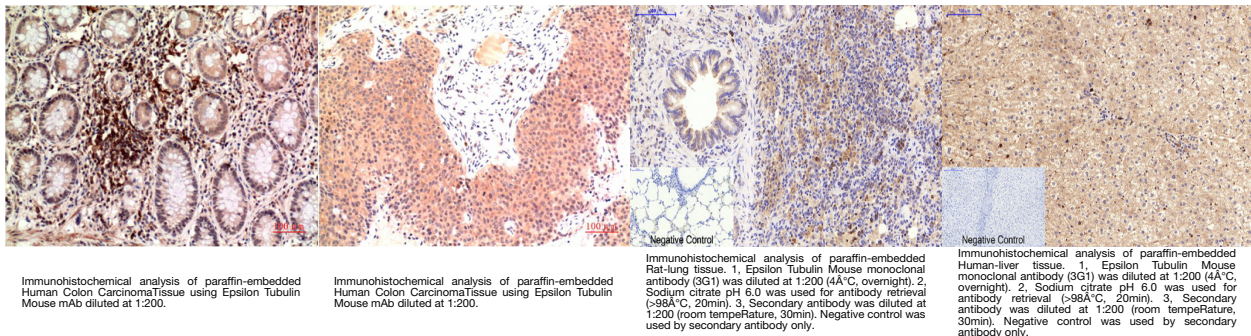
Product Type	Primary antibodies
Short Description	Mouse monoclonal antibody anti-Tubulin epsilon chain is suitable for use in Immunofluorescence and Immunohistochemistry research applications.
Applications	IF/IHC
Host/Source	Mouse
Reactivity	Human/Rat/Mouse

PRODUCT PROPERTIES

Clonality	Monoclonal
Clone ID	3G1
Concentration	1 mg/mL
Conjugation	Unconjugated
Purification	The antibody was affinity-purified from mouse ascites by affinity-chromatography using specific immunogen.
Dilution Range	IF 1:50-200 IHC 1:100-200
Formulation	Liquid in PBS containing 50% Glycerol, 0.5% BSA and 0.02% Sodium Azide.
Isotype	IgG1
Storage	Store at -20°C for up to 1 year from the date of receipt, and avoid repeat freeze-thaw cycles.
Instruction	

TARGET INFORMATION

Gene ID	51175
Gene Symbol	TUBE1
Uniprot ID	TBE_HUMAN
Immunogen	Synthetic Peptide of Epsilon Tubulin
Immunogen Region	
Specificity	Epsilon Tubulin protein detects endogenous levels of Epsilon Tubulin
Immunogen Sequence	



This product is suitable for in-vitro studies under the RESEARCH USE ONLY [RUO] licence. This product must not be used as for diagnostic or other medical purposes.
St John's Laboratory Ltd, Knowledge Dock Business Centre, University Way, London, E16 2RD | Tel: 0208 223 3081