

Anti-Phospho-ERK-Y222/205 antibody (140-220 aa) [4G3] (STJ97738)

STJ97738

GENERAL INFORMATION

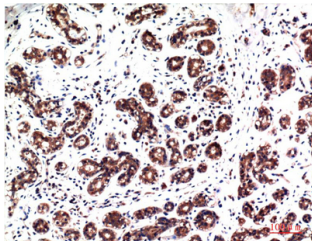
Product Type	Primary antibodies
Short Description	Mouse monoclonal antibody anti-Phospho-Mitogen-activated protein kinase 3 and Mitogen-activated protein kinase 1-Y222/205 (140-220 aa) is suitable for use in Immunohistochemistry and Immunofluorescence research applications.
Applications	IHC/IF
Host/Source	Mouse
Reactivity	Human/Rat/Mouse

PRODUCT PROPERTIES

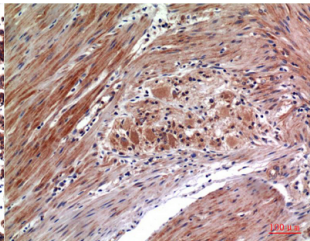
Clonality	Monoclonal
Clone ID	4G3
Concentration	1 mg/mL
Conjugation	Unconjugated
Purification	The antibody was affinity-purified from mouse ascites by affinity-chromatography using specific immunogen.
Dilution	IHC-P 1:100-200
Range	IF 1:50-200
Formulation	Liquid in PBS containing 50% Glycerol, 0.5% BSA and 0.02% Sodium Azide.
Isotype	IgG1
Storage	Store at -20°C for up to 1 year from the date of receipt, and avoid repeat freeze-thaw cycles.
Instruction	

TARGET INFORMATION

Gene ID	5595 5594
Gene Symbol	MAPK3 MAPK1
Uniprot ID	MK03_HUMAN MK01_HUMAN
Immunogen	Synthetic peptide of Phospho-ERK 1/2 (Y222/205) at the amino acid range of 140-220
Immunogen Region	140-220 aa
Specificity	Phospho-ERK 1/2 (Y222/205) protein detects endogenous levels of MAPK1/MAPK3
Immunogen Sequence	



Immunohistochemical analysis of paraffin-embedded Human Breast Carcinoma Tissue using Phospho-ERK1/2 Y222/205 Mouse mAb diluted at 1:200.



Immunohistochemical analysis of paraffin-embedded Human Colon Carcinoma Tissue using Phospho-ERK1/2 Y222/205 Mouse mAb diluted at 1:200.

This product is suitable for in-vitro studies under the RESEARCH USE ONLY [RUO] licence. This product must not be used as for diagnostic or other medical purposes.
St John's Laboratory Ltd, Knowledge Dock Business Centre, University Way, London, E16 2RD | Tel: 0208 223 3081