

## Anti-STAT1 antibody (640-720 aa) [8H11] (STJ97711)

STJ97711

### GENERAL INFORMATION

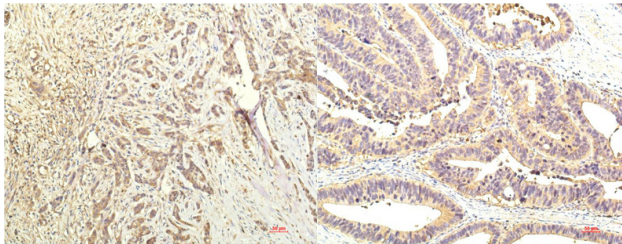
|                          |                                                                                                                                                                                                     |
|--------------------------|-----------------------------------------------------------------------------------------------------------------------------------------------------------------------------------------------------|
| <b>Product Type</b>      | Primary antibodies                                                                                                                                                                                  |
| <b>Short Description</b> | Mouse monoclonal antibody anti-Signal transducer and activator of transcription 1-alpha/beta (640-720 aa) is suitable for use in Immunohistochemistry and Immunofluorescence research applications. |
| <b>Applications</b>      | IHC/IF                                                                                                                                                                                              |
| <b>Host/Source</b>       | Mouse                                                                                                                                                                                               |
| <b>Reactivity</b>        | Human/Rat/Mouse                                                                                                                                                                                     |

### PRODUCT PROPERTIES

|                      |                                                                                                            |
|----------------------|------------------------------------------------------------------------------------------------------------|
| <b>Clonality</b>     | Monoclonal                                                                                                 |
| <b>Clone ID</b>      | 8H11                                                                                                       |
| <b>Concentration</b> | 1 mg/mL                                                                                                    |
| <b>Conjugation</b>   | Unconjugated                                                                                               |
| <b>Purification</b>  | The antibody was affinity-purified from mouse ascites by affinity-chromatography using specific immunogen. |
| <b>Dilution</b>      | IHC 1:100-200                                                                                              |
| <b>Range</b>         | IF 1:50-200                                                                                                |
| <b>Formulation</b>   | Liquid in PBS containing 50% Glycerol, 0.5% BSA and 0.02% Sodium Azide.                                    |
| <b>Isotype</b>       | IgG1                                                                                                       |
| <b>Storage</b>       | Store at -20°C for up to 1 year from the date of receipt, and avoid repeat freeze-thaw cycles.             |
| <b>Instruction</b>   |                                                                                                            |

### TARGET INFORMATION

|                           |                                                               |
|---------------------------|---------------------------------------------------------------|
| <b>Gene ID</b>            | 6772                                                          |
| <b>Gene Symbol</b>        | STAT1                                                         |
| <b>Uniprot ID</b>         | STAT1_HUMAN                                                   |
| <b>Immunogen</b>          | Synthetic peptide of STAT1 at the amino acid range of 640-720 |
| <b>Immunogen Region</b>   | 640-720 aa                                                    |
| <b>Specificity</b>        | STAT1 protein detects endogenous levels of STAT1              |
| <b>Immunogen Sequence</b> |                                                               |



Immunohistochemical analysis of paraffin-embedded Human Breast Carcinoma Tissue using STAT1 Mouse mAb diluted at 1:200

Immunohistochemical analysis of paraffin-embedded Human Colon Tissue using STAT1 Mouse mAb diluted at 1:200.

This product is suitable for in-vitro studies under the RESEARCH USE ONLY [RUO] licence. This product must not be used as for diagnostic or other medical purposes.  
St John's Laboratory Ltd, Knowledge Dock Business Centre, University Way, London, E16 2RD | Tel: 0208 223 3081