

Anti-RPS6KB1 antibody [1C7] (STJ97708)

STJ97708

GENERAL INFORMATION

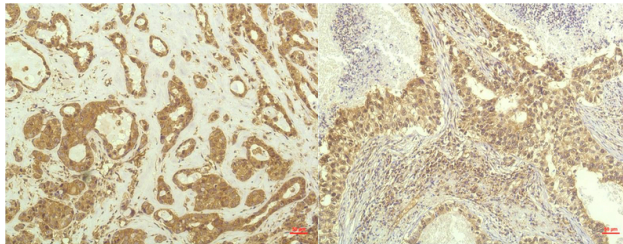
Product Type	Primary antibodies
Short Description	Mouse monoclonal antibody anti-Ribosomal protein S6 kinase beta-1 is suitable for use in Immunohistochemistry and Immunofluorescence research applications.
Applications	IHC/IF
Host/Source	Mouse
Reactivity	Human/Rat/Mouse

PRODUCT PROPERTIES

Clonality	Monoclonal
Clone ID	1C7
Concentration	1 mg/mL
Conjugation	Unconjugated
Purification	The antibody was affinity-purified from mouse ascites by affinity-chromatography using specific immunogen.
Dilution Range	IHC 1:100-200 IF 1:50-200
Formulation	Liquid in PBS containing 50% Glycerol, 0.5% BSA and 0.02% Sodium Azide.
Isotype	IgG1
Storage	Store at -20°C for up to 1 year from the date of receipt, and avoid repeat freeze-thaw cycles.
Instruction	

TARGET INFORMATION

Gene ID	6198
Gene Symbol	RPS6KB1
Uniprot ID	KS6B1_HUMAN
Immunogen	Recombinant Protein of P70 S6 Kinase of RPS6KB1
Immunogen Region	
Specificity	P70 S6 Kinase protein detects endogenous levels of RPS6KB1
Immunogen Sequence	



Immunohistochemical analysis of paraffin-embedded Human Breast Carcinoma Tissue using P70 S6 Kinase Mouse mAb diluted at 1:200.

Immunohistochemical analysis of paraffin-embedded Human Lung Carcinoma Tissue using P70 S6 Kinase Mouse mAb diluted at 1:200.

This product is suitable for in-vitro studies under the RESEARCH USE ONLY [RUO] licence. This product must not be used as for diagnostic or other medical purposes.
St John's Laboratory Ltd, Knowledge Dock Business Centre, University Way, London, E16 2RD | Tel: 0208 223 3081