

Anti-SSTR2 antibody (220-270 aa) (STJ97705)

STJ97705

GENERAL INFORMATION

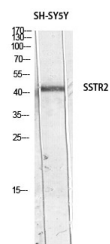
Product Type	Primary antibodies
Short Description	Rabbit polyclonal antibody anti-Somatostatin receptor type 2 (220-270 aa) is suitable for use in Western Blot and ELISA research applications.
Applications	WB/ELISA
Host/Source	Rabbit
Reactivity	Human/Mouse/Rat

PRODUCT PROPERTIES

Clonality	Polyclonal
Clone ID	
Concentration	1 mg/mL
Conjugation	Unconjugated
Purification	The antibody was affinity-purified from rabbit antiserum by affinity-chromatography using epitope-specific immunogen.
Dilution Range	WB 1:500-1:2000 ELISA 1:10000
Formulation	Liquid in PBS containing 50% Glycerol, 0.5% BSA and 0.02% Sodium Azide.
Isotype	IgG
Storage Instruction	Store at -20°C for up to 1 year from the date of receipt, and avoid repeat freeze-thaw cycles.

TARGET INFORMATION

Gene ID	6752
Gene Symbol	SSTR2
Uniprot ID	SSR2_HUMAN
Immunogen	The antiserum was produced against synthesized peptide derived from the Internal region of human SSTR2 at the amino acid range 220-270
Immunogen Region	220-270 aa
Specificity	SSTR2 Polyclonal Antibody detects endogenous levels of somatostatin receptor 2
Immunogen Sequence	



Western blot analysis of SH-SY5Y lysis using SSTR2 antibody. Antibody was diluted at 1:500. Secondary antibody was diluted at 1:20000

This product is suitable for in-vitro studies under the RESEARCH USE ONLY [RUO] licence. This product must not be used as for diagnostic or other medical purposes.
St John's Laboratory Ltd, Knowledge Dock Business Centre, University Way, London, E16 2RD | Tel: 0208 223 3081