

## Anti-Di-Methyl-Histone H3.1-Lys27 antibody (STJ97693)

STJ97693

### GENERAL INFORMATION

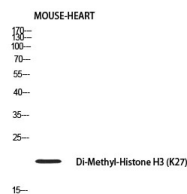
<b>Product Type</b>	Primary antibodies
<b>Short Description</b>	Rabbit polyclonal antibody anti-Di-Methyl-Histone H3.1-Lys27 is suitable for use in Western Blot and ELISA research applications.
<b>Applications</b>	WB/ELISA
<b>Host/Source</b>	Rabbit
<b>Reactivity</b>	Human/Mouse/Rat

### PRODUCT PROPERTIES

<b>Clonality</b>	Polyclonal
<b>Clone ID</b>	
<b>Concentration</b>	1 mg/mL
<b>Conjugation</b>	Unconjugated
<b>Purification</b>	The antibody was affinity-purified from rabbit antiserum by affinity-chromatography using epitope-specific immunogen.
<b>Dilution Range</b>	WB 1:500-1:2000 ELISA 1:10000
<b>Formulation</b>	Liquid in PBS containing 50% Glycerol, 0.5% BSA and 0.02% Sodium Azide.
<b>Isotype</b>	IgG
<b>Storage Instruction</b>	Store at -20°C for up to 1 year from the date of receipt, and avoid repeat freeze-thaw cycles.

### TARGET INFORMATION

<b>Gene ID</b>	8350/8351/8352/8353/8354/8355/8356/8357/8358/8968
<b>Gene Symbol</b>	H3C1.H3C2.H3C3.H3C4.H3C6.H3C7.H3C8.H3C10.H3C11.H3C12
<b>Uniprot ID</b>	H31_HUMAN
<b>Immunogen</b>	Synthesized peptide derived from the human Histone H3 around the di-methylation site of K27.
<b>Immunogen Region</b>	
<b>Specificity</b>	Di-Methyl-Histone H3 (K27) Polyclonal Antibody detects endogenous levels of Histone H3 around the methylation site of K27 protein.
<b>Immunogen Sequence</b>	



Western blot analysis of MOUSE-HEART using Di-Methyl-Histone H3 (K27) Polyclonal Antibody. Antibody was diluted at 1:500. Secondary antibody was diluted at 1:20000.

This product is suitable for in-vitro studies under the RESEARCH USE ONLY [RUO] licence. This product must not be used as for diagnostic or other medical purposes.  
St John's Laboratory Ltd, Knowledge Dock Business Centre, University Way, London, E16 2RD | Tel: 0208 223 3081