

Anti-ZFPM2 antibody (921-970 aa) (STJ97688)

STJ97688

GENERAL INFORMATION

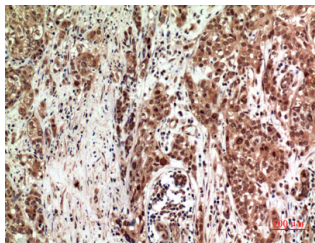
Product Type	Primary antibodies
Short Description	Rabbit polyclonal antibody anti-Zinc finger protein ZFPM2 (921-970 aa) is suitable for use in Western Blot, Immunohistochemistry, Immunofluorescence and ELISA research applications.
Applications	WB/IHC/IF/ELISA
Host/Source	Rabbit
Reactivity	Human/Mouse

PRODUCT PROPERTIES

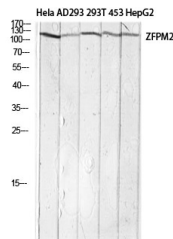
Clonality	Polyclonal
Clone ID	
Concentration	1 mg/mL
Conjugation	Unconjugated
Purification	The antibody was affinity-purified from rabbit antiserum by affinity-chromatography using epitope-specific immunogen.
Dilution Range	WB 1:500-1:2000 IHC-P 1:100-1:300 ELISA 1:10000 IF 1:50-200
Formulation	Liquid in PBS containing 50% Glycerol, 0.5% BSA and 0.02% Sodium Azide.
Isotype	IgG
Storage Instruction	Store at -20°C for up to 1 year from the date of receipt, and avoid repeat freeze-thaw cycles.

TARGET INFORMATION

Gene ID	23414
Gene Symbol	ZFPM2
Uniprot ID	FOG2_HUMAN
Immunogen	The antiserum was produced against synthesized peptide derived from the Internal region of human ZFPM2 at the amino acid range 921-970
Immunogen Region	921-970 aa
Specificity	FOG-2 Polyclonal Antibody detects endogenous levels of FOG-2 protein.
Immunogen Sequence	



Immunohistochemical analysis of paraffin-embedded human-breast-cancer, antibody was diluted at 1:100



Western blot analysis of HeLa AD293, 293T, 453, HepG2 lysis using ZFPM2 antibody. Antibody was diluted at 1:1000. Secondary antibody was diluted at 1:20000