

Anti-TP53INP2 antibody (161-210 aa) (STJ97686)

STJ97686

GENERAL INFORMATION

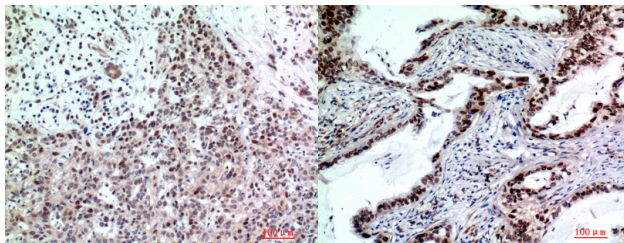
Product Type	Primary antibodies
Short Description	Rabbit polyclonal antibody anti-Tumor protein p53-inducible nuclear protein 2 (161-210 aa) is suitable for use in Western Blot, Immunohistochemistry, Immunofluorescence and ELISA research applications.
Applications	WB/IHC/IF/ELISA
Host/Source	Rabbit
Reactivity	Human/Rat/Mouse

PRODUCT PROPERTIES

Clonality	Polyclonal
Clone ID	
Concentration	1 mg/mL
Conjugation	Unconjugated
Purification	The antibody was affinity-purified from rabbit antiserum by affinity-chromatography using epitope-specific immunogen.
Dilution	WB 1:500-1:2000
Range	IHC-P 1:100-1:300 ELISA 1:10000 IF 1:50-200
Formulation	Liquid in PBS containing 50% Glycerol, 0.5% BSA and 0.02% Sodium Azide.
Isotype	IgG
Storage Instruction	Store at -20°C for up to 1 year from the date of receipt, and avoid repeat freeze-thaw cycles.

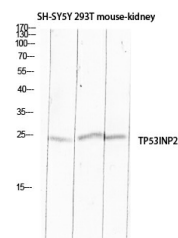
TARGET INFORMATION

Gene ID	58476
Gene Symbol	TP53INP2
Uniprot ID	T53I2_HUMAN
Immunogen	The antiserum was produced against synthesized peptide derived from the C-terminal region of human TP53INP2 at the amino acid range 161-210
Immunogen Region	161-210 aa
Specificity	TP53INP2 Polyclonal Antibody detects endogenous levels of TP53INP2 protein.
Immunogen Sequence	



Immunohistochemical analysis of paraffin-embedded human-breast-cancer, antibody was diluted at 1:200

Immunohistochemical analysis of paraffin-embedded human-lungcancer, antibody was diluted at 1:200



Western blot analysis of SH-SY5Y 293T mouse-kidney lysis using TP53INP2 antibody. Antibody was diluted at 1:500. Secondary antibody was diluted at 1:20000 cells nucleus extracted by Minute TM Cytoplasmic and Nuclear Fractionation kit (SC-003, Inventiotech, MN, USA).