

Anti-SNCA antibody (21-70 aa) (STJ97684)

STJ97684

GENERAL INFORMATION

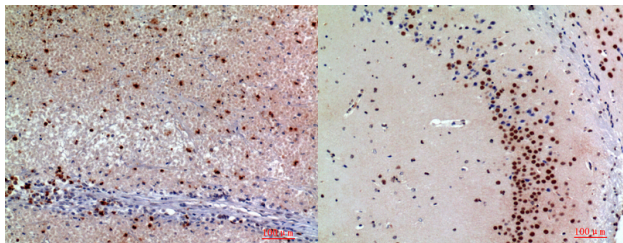
Product Type	Primary antibodies
Short Description	Rabbit polyclonal antibody anti-Alpha-synuclein (21-70 aa) is suitable for use in Western Blot, Immunohistochemistry, Immunofluorescence and ELISA research applications.
Applications	WB/IHC/IF/ELISA
Host/Source	Rabbit
Reactivity	Human/Mouse/Rat

PRODUCT PROPERTIES

Clonality	Polyclonal
Clone ID	
Concentration	1 mg/mL
Conjugation	Unconjugated
Purification	The antibody was affinity-purified from rabbit antiserum by affinity-chromatography using epitope-specific immunogen.
Dilution Range	WB 1:500-2000 IHC-P 1:100-500 IF ICC 1:100-500 ELISA 1:5000-20000
Formulation	Liquid in PBS containing 50% Glycerol, 0.5% BSA and 0.02% Sodium Azide.
Isotype	IgG
Storage Instruction	Store at -20°C for up to 1 year from the date of receipt, and avoid repeat freeze-thaw cycles.

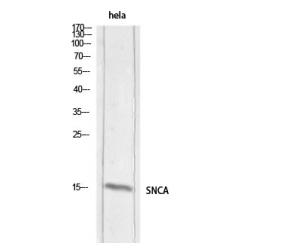
TARGET INFORMATION

Gene ID	6622
Gene Symbol	SNCA
Uniprot ID	SYUA_HUMAN
Immunogen	The antiserum was produced against synthesized peptide derived from the Internal region of human SNCA at the amino acid range 21-70
Immunogen Region	21-70 aa
Specificity	Synuclein-Alpha Polyclonal Antibody detects endogenous levels of Synuclein-Alpha protein.
Immunogen Sequence	



Immunohistochemical analysis of paraffin-embedded human-kidney cancer, antibody was diluted at 1:200

Immunohistochemical analysis of paraffin-embedded mouse-brain, antibody was diluted at 1:200



Western blot analysis of HeLa lysis using SNCA antibody. Secondary antibody was diluted at 1:20000

This product is suitable for in-vitro studies under the RESEARCH USE ONLY [RUO] licence. This product must not be used as for diagnostic or other medical purposes.
St John's Laboratory Ltd, Knowledge Dock Business Centre, University Way, London, E16 2RD | Tel: 0208 223 3081