

Anti-IL1F10 antibody (101-150 aa) (STJ97678)

STJ97678

GENERAL INFORMATION

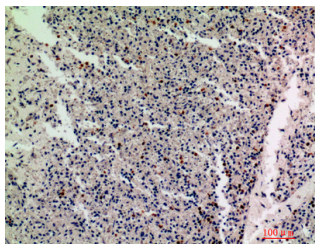
| | |
|--------------------------|--|
| Product Type | Primary antibodies |
| Short Description | Rabbit polyclonal antibody anti-Interleukin-1 family member 10 (101-150 aa) is suitable for use in Western Blot, Immunohistochemistry, Immunofluorescence and ELISA research applications. |
| Applications | WB/IHC/IF/ELISA |
| Host/Source | Rabbit |
| Reactivity | Human/Rat/Mouse |

PRODUCT PROPERTIES

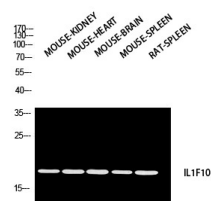
| | |
|----------------------------|---|
| Clonality | Polyclonal |
| Clone ID | |
| Concentration | 1 mg/mL |
| Conjugation | Unconjugated |
| Purification | The antibody was affinity-purified from rabbit antiserum by affinity-chromatography using epitope-specific immunogen. |
| Dilution Range | WB 1:500-1:2000 IHC-P 1:100-1:300 ELISA 1:10000 IF 1:50-200 |
| Formulation | Liquid in PBS containing 50% Glycerol, 0.5% BSA and 0.02% Sodium Azide. |
| Isotype | IgG |
| Storage Instruction | Store at -20°C for up to 1 year from the date of receipt, and avoid repeat freeze-thaw cycles. |

TARGET INFORMATION

| | |
|---------------------------|---|
| Gene ID | 84639 |
| Gene Symbol | IL1F10 |
| Uniprot ID | IL1FA_HUMAN |
| Immunogen | Synthesized peptide derived from Interleukin-1 family member 10 at the amino acid range 101-150 |
| Immunogen Region | 101-150 aa |
| Specificity | IL-1F10 Polyclonal Antibody detects endogenous levels of IL-1F10 protein. |
| Immunogen Sequence | |



Immunohistochemical analysis of paraffin-embedded human-spleen, antibody was diluted at 1:200



Western blot analysis of mouse kidney, mouse heart, mouse brain, mouse spleen and rat spleen using IL1F10 antibody. Antibody was diluted at 1:2000. Secondary antibody was diluted at 1:20000

This product is suitable for in-vitro studies under the RESEARCH USE ONLY [RUO] licence. This product must not be used as for diagnostic or other medical purposes.
St John's Laboratory Ltd, Knowledge Dock Business Centre, University Way, London, E16 2RD | Tel: 0208 223 3081