

## Anti-Cleaved-CASP8-S217 antibody (170-250 aa) (STJ97641)

### GENERAL INFORMATION

<b>Product Type</b>	Primary antibodies
<b>Short Description</b>	Rabbit polyclonal antibody anti-Cleaved-Caspase-8-S217 (170-250 aa) is suitable for use in Western Blot and ELISA research applications.
<b>Applications</b>	WB/ELISA
<b>Host/Source</b>	Rabbit
<b>Reactivity</b>	Human/Rat/Mouse

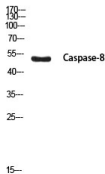
### PRODUCT PROPERTIES

<b>Clonality</b>	Polyclonal
<b>Clone ID</b>	
<b>Concentration</b>	1 mg/mL
<b>Conjugation</b>	Unconjugated
<b>Purification</b>	The antibody was affinity-purified from rabbit antiserum by affinity-chromatography using epitope-specific immunogen.
<b>Dilution Range</b>	WB 1:500-1:2000 ELISA 1:10000
<b>Formulation</b>	Liquid in PBS containing 50% Glycerol, 0.5% BSA and 0.02% Sodium Azide.
<b>Isotype</b>	IgG
<b>Storage Instruction</b>	Store at -20°C for up to 1 year from the date of receipt, and avoid repeat freeze-thaw cycles.

### TARGET INFORMATION

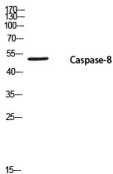
<b>Gene ID</b>	841
<b>Gene Symbol</b>	CASP8
<b>Uniprot ID</b>	CASP8_HUMAN
<b>Immunogen</b>	Synthesized peptide derived from Cleaved-Caspase-8 p18 (S217) at the amino acid range 170-250
<b>Immunogen Region</b>	170-250 aa
<b>Specificity</b>	Cleaved-Caspase-8 p18 (S217) Polyclonal Antibody detects endogenous levels of Cleaved-Caspase-8 p18 (S217) protein.
<b>Immunogen Sequence</b>	

MOUSE-SPLEEN



Western blot analysis of mouse spleen using Cleaved-Caspase-8 p18 (S217) antibody. Antibody was diluted at 1:1000. Secondary antibody was diluted at 1:20000

MOUSE-SPLEEN



Western blot analysis of mouse spleen using Caspase-8 P18 antibody. Antibody was diluted at 1:1000. Secondary antibody was diluted at 1:20000

This product is suitable for in-vitro studies under the RESEARCH USE ONLY [RUO] licence. This product must not be used as for diagnostic or other medical purposes.  
St John's Laboratory Ltd, Knowledge Dock Business Centre, University Way, London, E16 2RD | Tel: 0208 223 3081