

Anti-NHERF2 antibody (20-100 aa) (STJ97629)

STJ97629

GENERAL INFORMATION

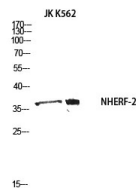
Product Type	Primary antibodies
Short Description	Rabbit polyclonal antibody anti-Na ⁺ /H ⁺ exchange regulatory cofactor NHE-RF2 (20-100 aa) is suitable for use in Western Blot and ELISA research applications.
Applications	WB/ELISA
Host/Source	Rabbit
Reactivity	Human/Mouse/Rat

PRODUCT PROPERTIES

Clonality	Polyclonal
Clone ID	
Concentration	1 mg/mL
Conjugation	Unconjugated
Purification	The antibody was affinity-purified from rabbit antiserum by affinity-chromatography using epitope-specific immunogen.
Dilution Range	WB 1:500-1:2000 ELISA 1:10000
Formulation	Liquid in PBS containing 50% Glycerol, 0.5% BSA and 0.02% Sodium Azide.
Isotype	IgG
Storage	Store at -20°C for up to 1 year from the date of receipt, and avoid repeat freeze-thaw cycles.
Instruction	

TARGET INFORMATION

Gene ID	9351
Gene Symbol	NHERF2
Uniprot ID	NHERF2_HUMAN
Immunogen	Synthesized peptide derived from NHERF-2 at the amino acid range 20-100
Immunogen Region	20-100 aa
Specificity	NHERF-2 Polyclonal Antibody detects endogenous levels of NHERF-2 protein.
Immunogen Sequence	



Western blot analysis of JK K562 using NHERF-2 antibody. Secondary antibody was diluted at 1:20000

This product is suitable for in-vitro studies under the RESEARCH USE ONLY [RUO] licence. This product must not be used as for diagnostic or other medical purposes.
St John's Laboratory Ltd, Knowledge Dock Business Centre, University Way, London, E16 2RD | Tel: 0208 223 3081