

Anti-Pan-Methyl-Lysine-Mix antibody [Mix] (STJ97446)

STJ97446

GENERAL INFORMATION

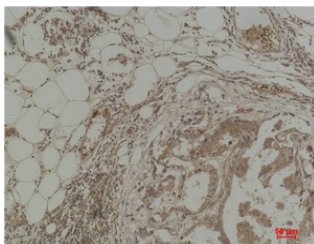
Product Type	Primary antibodies
Short Description	Mouse monoclonal antibody anti-Pan-Methyl-Lysine-Mix is suitable for use in Western Blot, Immunohistochemistry and Immunofluorescence research applications.
Applications	WB/IHC/IF
Host/Source	Mouse
Reactivity	Species independent

PRODUCT PROPERTIES

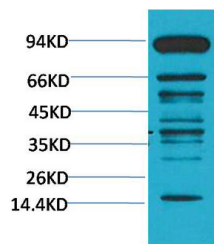
Clonality	Monoclonal
Clone ID	Mix
Concentration	
Conjugation	Unconjugated
Purification	The antibody was affinity-purified from mouse ascites by affinity-chromatography using epitope-specific immunogen.
Dilution Range	WB 1:1000-2000 IHC 1:200-500 IF 1:50-200
Formulation	Liquid in PBS pH7.4, 0.5% BSA, 0.02% Sodium Azide and 50% Glycerol.
Isotype	IgG1
Storage Instruction	Store at -20°C for up to 1 year from the date of receipt, and avoid repeat freeze-thaw cycles.

TARGET INFORMATION

Gene ID	
Gene Symbol	
Uniprot ID	
Immunogen	Conjugated Protein
Immunogen Region	
Specificity	The antibody detects endogenous Pan Methylated Lysine protein.
Immunogen Sequence	



Immunohistochemical analysis of paraffin-embedded Human Breast Carcinoma using Pan Methylated Lysine monoclonal antibody.



Western blot analysis of HeLa using Pan Methylated Lysine monoclonal antibody.

This product is suitable for in-vitro studies under the RESEARCH USE ONLY [RUO] licence. This product must not be used as for diagnostic or other medical purposes.
St John's Laboratory Ltd, Knowledge Dock Business Centre, University Way, London, E16 2RD | Tel: 0208 223 3081