

Anti-CREB1 antibody (100-200 aa) [4B4] (STJ97445)

STJ97445

GENERAL INFORMATION

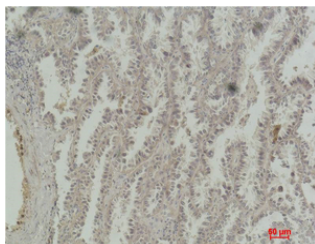
Product Type	Primary antibodies
Short Description	Mouse monoclonal antibody anti-Cyclic AMP-responsive element-binding protein 1 (100-200 aa) is suitable for use in Western Blot, Immunohistochemistry and Immunofluorescence research applications.
Applications	WB/IHC/IF
Host/Source	Mouse
Reactivity	Human/Mouse/Rat

PRODUCT PROPERTIES

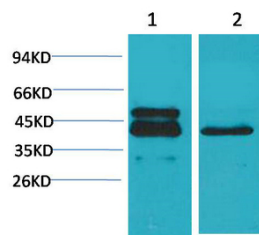
Clonality	Monoclonal
Clone ID	4B4
Concentration	
Conjugation	Unconjugated
Purification	The antibody was affinity-purified from mouse ascites by affinity-chromatography using epitope-specific immunogen.
Dilution	WB 1:500-1000
Range	IHC 1:100-200 IF 1:50-200
Formulation	Liquid in PBS pH7.4, 0.5% BSA, 0.02% Sodium Azide and 50% Glycerol.
Isotype	IgG1k
Storage	Store at -20°C for up to 1 year from the date of receipt, and avoid repeat freeze-thaw cycles.
Instruction	

TARGET INFORMATION

Gene ID	1385
Gene Symbol	CREB1
Uniprot ID	CREB1_HUMAN
Immunogen	Recombinant Protein of human CREB-1 at the amino acid range 100-200
Immunogen Region	100-200 aa
Specificity	The antibody detects endogenous CREB-1 protein.
Immunogen Sequence	



Immunohistochemical analysis of paraffin-embedded Human Lung Carcinoma using CREB-1 monoclonal antibody.



Western blot analysis of 1) A431, 2) 3T3 using CREB-1 monoclonal antibody.

This product is suitable for in-vitro studies under the RESEARCH USE ONLY [RUO] licence. This product must not be used as for diagnostic or other medical purposes.
St John's Laboratory Ltd, Knowledge Dock Business Centre, University Way, London, E16 2RD | Tel: 0208 223 3081