

Anti-NRTN antibody (111-160 aa) (STJ97344)

STJ97344

GENERAL INFORMATION

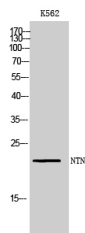
Product Type	Primary antibodies
Short Description	Rabbit polyclonal antibody anti-Neurturin (111-160 aa) is suitable for use in Western Blot and ELISA research applications.
Applications	WB/ELISA
Host/Source	Rabbit
Reactivity	Human/Rat/Mouse

PRODUCT PROPERTIES

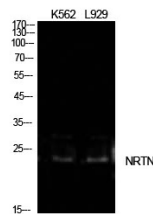
Clonality	Polyclonal
Clone ID	
Concentration	1 mg/mL
Conjugation	Unconjugated
Purification	The antibody was affinity-purified from rabbit antiserum by affinity-chromatography using epitope-specific immunogen.
Dilution Range	WB 1:500-1:2000 ELISA 1:10000
Formulation	Liquid in PBS containing 50% Glycerol, 0.5% BSA and 0.02% Sodium Azide.
Isotype	IgG
Storage Instruction	Store at -20°C for up to 1 year from the date of receipt, and avoid repeat freeze-thaw cycles.

TARGET INFORMATION

Gene ID	4902
Gene Symbol	NRTN
Uniprot ID	NRTN_HUMAN
Immunogen	The antiserum was produced against synthesized peptide derived from the Internal region of human NRTN at the amino acid range 111-160
Immunogen Region	111-160 aa
Specificity	NTN Polyclonal Antibody detects endogenous levels of NTN protein.
Immunogen Sequence	



Western blot analysis of K562 cells using NTN Polyclonal Antibody diluted at 11x1000. Secondary antibody was diluted at 1:20000



Western blot analysis of K562, L929 cells using NTN Polyclonal Antibody. Antibody was diluted at 1:1000. Secondary antibody was diluted at 1:20000

This product is suitable for in-vitro studies under the RESEARCH USE ONLY [RUO] licence. This product must not be used as for diagnostic or other medical purposes.
St John's Laboratory Ltd, Knowledge Dock Business Centre, University Way, London, E16 2RD | Tel: 0208 223 3081