

Anti-Lefty antibody (301-350 aa) (STJ97342)

STJ97342

GENERAL INFORMATION

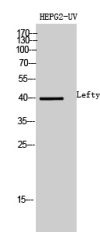
Product Type	Primary antibodies
Short Description	Rabbit polyclonal antibody anti-Left-right determination factor 1 and Left-right determination factor 2 (301-350 aa) is suitable for use in Western Blot and Immunohistochemistry research applications.
Applications	WB/IHC
Host/Source	Rabbit
Reactivity	Human/Mouse

PRODUCT PROPERTIES

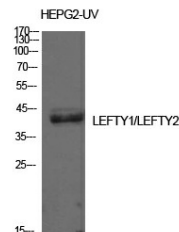
Clonality	Polyclonal
Clone ID	
Concentration	1 mg/mL
Conjugation	Unconjugated
Purification	The antibody was affinity-purified from rabbit antiserum by affinity-chromatography using epitope-specific immunogen.
Dilution	WB 1:500-2000
Range	IHC-P 1:50-300
Formulation	Liquid in PBS containing 50% Glycerol, 0.5% BSA and 0.02% Sodium Azide.
Isotype	IgG
Storage	Store at -20°C for up to 1 year from the date of receipt, and avoid repeat freeze-thaw cycles.
Instruction	

TARGET INFORMATION

Gene ID	10637 7044
Gene Symbol	LEFTY1 LEFTY2
Uniprot ID	LFTY1_HUMAN LFTY2_HUMAN
Immunogen	The antiserum was produced against synthesized peptide derived from the C-terminal region of human LEFTY1/LEFTY2 at the amino acid range 301-350
Immunogen Region	301-350 aa
Specificity	Lefty Polyclonal Antibody detects endogenous levels of Lefty protein.
Immunogen Sequence	



Western blot analysis of HEPG2-UV cells using Lefty Polyclonal Antibody diluted at 11/4500. Secondary antibody was diluted at 1:20000



Western blot analysis of HepG2-UV cells using Lefty Polyclonal Antibody. Antibody was diluted at 1:500. Secondary antibody was diluted at 1:20000

This product is suitable for in-vitro studies under the RESEARCH USE ONLY [RUO] licence. This product must not be used as for diagnostic or other medical purposes.
St John's Laboratory Ltd, Knowledge Dock Business Centre, University Way, London, E16 2RD | Tel: 0208 223 3081