

Anti-GDF3 antibody (311-360 aa) (STJ97341)

STJ97341

GENERAL INFORMATION

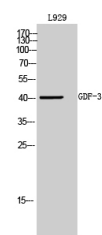
Product Type	Primary antibodies
Short Description	Rabbit polyclonal antibody anti-Growth/differentiation factor 3 (311-360 aa) is suitable for use in Western Blot and ELISA research applications.
Applications	WB/ELISA
Host/Source	Rabbit
Reactivity	Human/Rat/Mouse

PRODUCT PROPERTIES

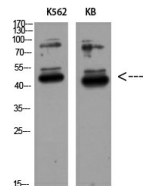
Clonality	Polyclonal
Clone ID	
Concentration	1 mg/mL
Conjugation	Unconjugated
Purification	The antibody was affinity-purified from rabbit antiserum by affinity-chromatography using epitope-specific immunogen.
Dilution Range	WB 1:500-1:2000 ELISA 1:10000
Formulation	Liquid in PBS containing 50% Glycerol, 0.5% BSA and 0.02% Sodium Azide.
Isotype	IgG
Storage Instruction	Store at -20°C for up to 1 year from the date of receipt, and avoid repeat freeze-thaw cycles.

TARGET INFORMATION

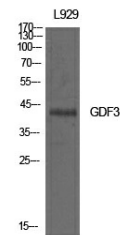
Gene ID	9573
Gene Symbol	GDF3
Uniprot ID	GDF3_HUMAN
Immunogen	Synthesized peptide derived from Growth/differentiation factor 3 at the amino acid range 311-360
Immunogen Region	311-360 aa
Specificity	GDF-3 Polyclonal Antibody detects endogenous levels of GDF-3 protein.
Immunogen Sequence	



Western blot analysis of L929 cells using GDF-3 Polyclonal Antibody diluted at 1:4500. Secondary antibody was diluted at 1:20000



Western blot analysis of K562 KB using GDF-3 Polyclonal Antibody diluted at 1:500. Secondary antibody was diluted at 1:20000



Western blot analysis of L929 cells using GDF-3 Polyclonal Antibody. Antibody was diluted at 1:500. Secondary antibody was diluted at 1:20000

This product is suitable for in-vitro studies under the RESEARCH USE ONLY [RUO] licence. This product must not be used as for diagnostic or other medical purposes.
St John's Laboratory Ltd, Knowledge Dock Business Centre, University Way, London, E16 2RD | Tel: 0208 223 3081