

Anti-GYPA antibody (41-90 aa) (STJ97333)

STJ97333

GENERAL INFORMATION

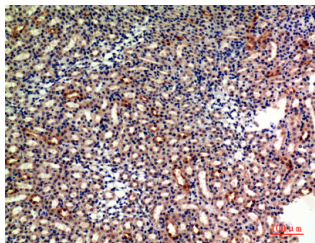
Product Type	Primary antibodies
Short Description	Rabbit polyclonal antibody anti-Glycophorin-A (41-90 aa) is suitable for use in Western Blot, Immunohistochemistry, Immunofluorescence and ELISA research applications.
Applications	WB/IHC/IF/ELISA
Host/Source	Rabbit
Reactivity	Human/Rat/Mouse

PRODUCT PROPERTIES

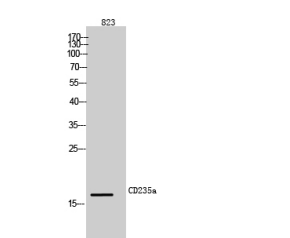
Clonality	Polyclonal
Clone ID	
Concentration	1 mg/mL
Conjugation	Unconjugated
Purification	The antibody was affinity-purified from rabbit antiserum by affinity-chromatography using epitope-specific immunogen.
Dilution Range	WB 1:500-1:2000 IHC-P 1:100-1:300 ELISA 1:10000 IF 1:50-200
Formulation	Liquid in PBS containing 50% Glycerol, 0.5% BSA and 0.02% Sodium Azide.
Isotype	IgG
Storage Instruction	Store at -20°C for up to 1 year from the date of receipt, and avoid repeat freeze-thaw cycles.

TARGET INFORMATION

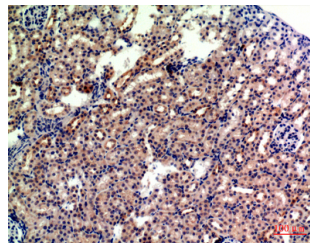
Gene ID	2993
Gene Symbol	GYPA
Uniprot ID	GLPA_HUMAN
Immunogen	The antiserum was produced against synthesized peptide derived from the Internal region of human GYPA at the amino acid range 41-90
Immunogen Region	41-90 aa
Specificity	CD235a Polyclonal Antibody detects endogenous levels of CD235a protein.
Immunogen Sequence	



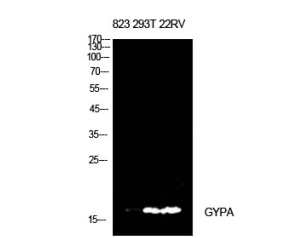
Immunohistochemical analysis of paraffin-embedded mouse-kidney, antibody was diluted at 1:200



Western blot analysis of 823 cells using CD235a Polyclonal Antibody diluted at 1%500. Secondary antibody was diluted at 1:20000



Immunohistochemical analysis of paraffin-embedded mouse-kidney, antibody was diluted at 1:200



Western blot analysis of 823, 293T, 22RV cells using CD235a Polyclonal Antibody. Antibody was diluted at 1:500. Secondary antibody was diluted at 1:20000

This product is suitable for in-vitro studies under the RESEARCH USE ONLY [RUO] licence. This product must not be used as for diagnostic or other medical purposes.

St John's Laboratory Ltd, Knowledge Dock Business Centre, University Way, London, E16 2RD | Tel: 0208 223 3081