

Anti-ATP1B3 antibody (222-271 aa) (STJ97318)

STJ97318

GENERAL INFORMATION

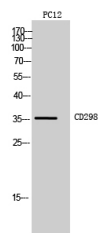
Product Type	Primary antibodies
Short Description	Rabbit polyclonal antibody anti-Sodium/potassium-transporting ATPase subunit beta-3 (222-271 aa) is suitable for use in Western Blot and ELISA research applications.
Applications	WB/ELISA
Host/Source	Rabbit
Reactivity	Human/Rat/Mouse

PRODUCT PROPERTIES

Clonality	Polyclonal
Clone ID	
Concentration	1 mg/mL
Conjugation	Unconjugated
Purification	The antibody was affinity-purified from rabbit antiserum by affinity-chromatography using epitope-specific immunogen.
Dilution Range	WB 1:500-1:2000 ELISA 1:10000
Formulation	Liquid in PBS containing 50% Glycerol, 0.5% BSA and 0.02% Sodium Azide.
Isotype	IgG
Storage	Store at -20°C for up to 1 year from the date of receipt, and avoid repeat freeze-thaw cycles.
Instruction	

TARGET INFORMATION

Gene ID	483
Gene Symbol	ATP1B3
Uniprot ID	AT1B3_HUMAN
Immunogen	The antiserum was produced against synthesized peptide derived from the C-terminal region of human ATP1B3 at the amino acid range 222-271
Immunogen Region	222-271 aa
Specificity	CD298 Polyclonal Antibody detects endogenous levels of CD298 protein.
Immunogen Sequence	



Western blot analysis of PC12, NIH-3T3 cells using CD298 Polyclonal Antibody. Secondary antibody was diluted at 1:20000

This product is suitable for in-vitro studies under the RESEARCH USE ONLY [RUO] licence. This product must not be used as for diagnostic or other medical purposes.
St John's Laboratory Ltd, Knowledge Dock Business Centre, University Way, London, E16 2RD | Tel: 0208 223 3081