

Anti-CD66c/d antibody (31-80 aa) (STJ97289)

STJ97289

GENERAL INFORMATION

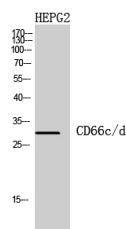
Product Type	Primary antibodies
Short Description	Rabbit polyclonal antibody anti-Carcinoembryonic antigen-related cell adhesion molecule 3 and Carcinoembryonic antigen-related cell adhesion molecule 6 (31-80 aa) is suitable for use in Western Blot and ELISA research applications.
Applications	WB/ELISA
Host/Source	Rabbit
Reactivity	Human/Rat/Mouse

PRODUCT PROPERTIES

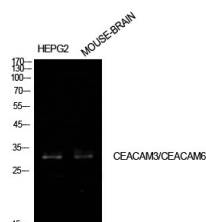
Clonality	Polyclonal
Clone ID	
Concentration	1 mg/mL
Conjugation	Unconjugated
Purification	The antibody was affinity-purified from rabbit antiserum by affinity-chromatography using epitope-specific immunogen.
Dilution	WB 1:500-1:2000
Range	ELISA 1:10000
Formulation	Liquid in PBS containing 50% Glycerol, 0.5% BSA and 0.02% Sodium Azide.
Isotype	IgG
Storage	Store at -20°C for up to 1 year from the date of receipt, and avoid repeat freeze-thaw cycles.
Instruction	

TARGET INFORMATION

Gene ID	4680 1084
Gene Symbol	CEACAM6 CEACAM3
Uniprot ID	CEAM6_HUMAN CEAM3_HUMAN
Immunogen	The antiserum was produced against synthesized peptide derived from the Internal region of human CEACAM3/CEACAM6 at the amino acid range 31-80
Immunogen Region	31-80 aa
Specificity	CD66c/d Polyclonal Antibody detects endogenous levels of CD66c/d protein.
Immunogen Sequence	



Western blot analysis of HEPG2 cells using CD66c/d Polyclonal Antibody diluted at 1/1000. Secondary antibody was diluted at 1:20000



Western blot analysis of HEPG2, mouse brain cells using CD66c/d Polyclonal Antibody. Antibody was diluted at 1:1000. Secondary antibody was diluted at 1:20000

This product is suitable for in-vitro studies under the RESEARCH USE ONLY [RUO] licence. This product must not be used as for diagnostic or other medical purposes.
St John's Laboratory Ltd, Knowledge Dock Business Centre, University Way, London, E16 2RD | Tel: 0208 223 3081