

Anti-SELP antibody (81-130 aa) (STJ97288)

STJ97288

GENERAL INFORMATION

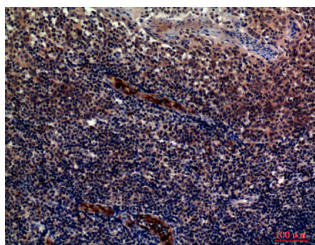
Product Type	Primary antibodies
Short Description	Rabbit polyclonal antibody anti-P-selectin (81-130 aa) is suitable for use in Western Blot, Immunohistochemistry, Immunofluorescence and ELISA research applications.
Applications	WB/IHC/IF/ELISA
Host/Source	Rabbit
Reactivity	Human/Mouse/Rat

PRODUCT PROPERTIES

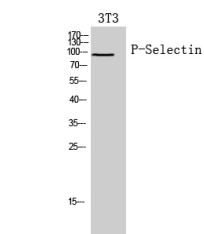
Clonality	Polyclonal
Clone ID	
Concentration	1 mg/mL
Conjugation	Unconjugated
Purification	The antibody was affinity-purified from rabbit antiserum by affinity-chromatography using epitope-specific immunogen.
Dilution Range	WB 1:500-1:2000 IHC-P 1:100-1:300 ELISA 1:10000 IF 1:50-200
Formulation	Liquid in PBS containing 50% Glycerol, 0.5% BSA and 0.02% Sodium Azide.
Isotype	IgG
Storage Instruction	Store at -20°C for up to 1 year from the date of receipt, and avoid repeat freeze-thaw cycles.

TARGET INFORMATION

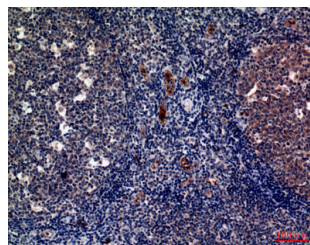
Gene ID	6403
Gene Symbol	SELP
Uniprot ID	LYAM3_HUMAN
Immunogen	The antiserum was produced against synthesized peptide derived from the N-terminal region of human SELP at the amino acid range 81-130
Immunogen Region	81-130 aa
Specificity	P-Selectin Polyclonal Antibody detects endogenous levels of P-Selectin protein.
Immunogen Sequence	



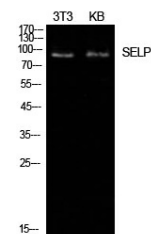
Immunohistochemical analysis of paraffin-embedded human tonsils, antibody was diluted at 1:100



Western blot analysis of 3T3 cells using P-Selectin Polyclonal Antibody. Secondary antibody was diluted at 1:20000



Immunohistochemical analysis of paraffin-embedded human tonsils, antibody was diluted at 1:100



Western blot analysis of NIH-3T3, KB cells using P-Selectin Polyclonal Antibody. Secondary antibody was diluted at 1:20000

This product is suitable for in-vitro studies under the RESEARCH USE ONLY [RUO] licence. This product must not be used as for diagnostic or other medical purposes.
St John's Laboratory Ltd, Knowledge Dock Business Centre, University Way, London, E16 2RD | Tel: 0208 223 3081