

Anti-CD36 antibody (331-380 aa) (STJ97280)

STJ97280

GENERAL INFORMATION

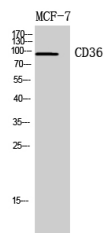
Product Type	Primary antibodies
Short Description	Rabbit polyclonal antibody anti-Platelet glycoprotein 4 (331-380 aa) is suitable for use in Western Blot, Immunohistochemistry and ELISA research applications.
Applications	WB/IHC/ELISA
Host/Source	Rabbit
Reactivity	Human/Mouse/Rat/Tilapia

PRODUCT PROPERTIES

Clonality	Polyclonal
Clone ID	
Concentration	1 mg/mL
Conjugation	Unconjugated
Purification	The antibody was affinity-purified from rabbit antiserum by affinity-chromatography using epitope-specific immunogen.
Dilution Range	WB 1:500-1:2000 IHC 1:100-1:300 ELISA 1:10000
Formulation	Liquid in PBS containing 50% Glycerol, 0.5% BSA and 0.02% Sodium Azide.
Isotype	IgG
Storage Instruction	Store at -20°C for up to 1 year from the date of receipt, and avoid repeat freeze-thaw cycles.

TARGET INFORMATION

Gene ID	948
Gene Symbol	CD36
Uniprot ID	CD36_HUMAN
Immunogen	The antiserum was produced against synthesized peptide derived from the Internal region of human CD36 at the amino acid range 331-380
Immunogen Region	331-380 aa
Specificity	CD36 Polyclonal Antibody detects endogenous levels of CD36 protein.
Immunogen Sequence	



Western blot analysis of MCF7, 4T1 cells using CD36 Polyclonal Antibody. Secondary antibody was diluted at 1:20000