

Anti-Acetyl-HSP70-Lys246 antibody (STJ97228)

STJ97228

GENERAL INFORMATION

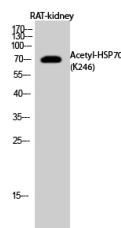
Product Type	Primary antibodies
Short Description	Rabbit polyclonal antibody anti-Acetyl-HSP70-Lys246 is suitable for use in Western Blot and ELISA research applications.
Applications	WB/ELISA
Host/Source	Rabbit
Reactivity	Human/Rat/Mouse

PRODUCT PROPERTIES

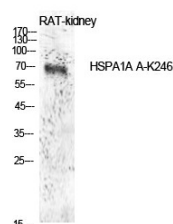
Clonality	Polyclonal
Clone ID	
Concentration	1 mg/mL
Conjugation	Unconjugated
Purification	The antibody was affinity-purified from rabbit antiserum by affinity-chromatography using epitope-specific immunogen.
Dilution Range	WB 1:500-1:2000 ELISA 1:10000
Formulation	Liquid in PBS containing 50% Glycerol, 0.5% BSA and 0.02% Sodium Azide.
Isotype	IgG
Storage Instruction	Store at -20°C for up to 1 year from the date of receipt, and avoid repeat freeze-thaw cycles.

TARGET INFORMATION

Gene ID	3303/3304 3303/3304
Gene Symbol	HSPA1B HSPA1A
Uniprot ID	HS71B_HUMAN HS71A_HUMAN
Immunogen	Synthesized acetyl-peptide derived from the Internal region of human HSP70 around the acetylation site of K246.
Immunogen Region	
Specificity	Acetyl-HSP70 (K246) Polyclonal Antibody detects endogenous levels of HSP70 protein only when acetylation at K246.
Immunogen Sequence	



Western blot analysis of RAT-kidney cells using Acetyl-HSP70 (K246) Polyclonal Antibody diluted at 1:1000. Secondary antibody was diluted at 1:20000



Western blot analysis of rat kidney cells using Acetyl-HSP70 (K246) Polyclonal Antibody. Antibody was diluted at 1:1000. Secondary antibody was diluted at 1:20000

This product is suitable for in-vitro studies under the RESEARCH USE ONLY [RUO] licence. This product must not be used as for diagnostic or other medical purposes.
St John's Laboratory Ltd, Knowledge Dock Business Centre, University Way, London, E16 2RD | Tel: 0208 223 3081