

## Mouse Anti-Rabbit IgG Light Chain antibody {Unconjugated} (STJ97070)

STJ97070

### GENERAL INFORMATION

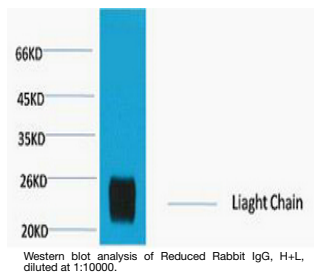
<b>Product Type</b>	Secondary antibodies
<b>Short Description</b>	Unconjugated mouse monoclonal anti-Rabbit IgG Light Chain secondary antibody. For use in most research applications.
<b>Applications</b>	WB
<b>Host/Source</b>	Mouse
<b>Reactivity</b>	Rabbit

### PRODUCT PROPERTIES

<b>Clonality</b>	Monoclonal
<b>Clone ID</b>	8D6
<b>Concentration</b>	
<b>Conjugation</b>	Unconjugated
<b>Purification</b>	The antibody was affinity-purified from mouse ascites by affinity-chromatography using specific immunogen.
<b>Dilution Range</b>	WB 1:2000-5000
<b>Formulation</b>	Liquid in PBS pH7.4, 0.5% BSA, 0.02% Sodium Azide and 50% Glycerol.
<b>Isotype</b>	IgG1
<b>Storage Instruction</b>	Store at -20°C for up to 1 year from the date of receipt, and avoid repeat freeze-thaw cycles.

### TARGET INFORMATION

<b>Gene ID</b>	
<b>Gene Symbol</b>	
<b>Uniprot ID</b>	
<b>Immunogen</b>	Recombinant Protein of Rabbit IgG (Light Chain Specific)
<b>Immunogen Region</b>	
<b>Specificity</b>	The antibody reacts with the light chains on rabbit IgG and with those common to other rabbit immunoglobulins. The antibody does not react with the heavy chain of rabbit IgG. The antibody minimal cross
<b>Immunogen Sequence</b>	



This product is suitable for in-vitro studies under the RESEARCH USE ONLY [RUO] licence. This product must not be used as for diagnostic or other medical purposes.  
St John's Laboratory Ltd, Knowledge Dock Business Centre, University Way, London, E16 2RD | Tel: 0208 223 3081