

## Mouse Anti-Rabbit IgG Fc Heavy Chain antibody {Unconjugated} (STJ97069)

STJ97069

### GENERAL INFORMATION

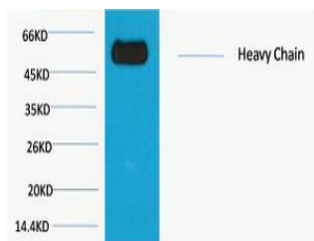
<b>Product Type</b>	Secondary antibodies
<b>Short Description</b>	Unconjugated mouse monoclonal anti-Rabbit IgG Fc Heavy Chain secondary antibody. For use in most research applications.
<b>Applications</b>	WB
<b>Host/Source</b>	Mouse
<b>Reactivity</b>	Rabbit

### PRODUCT PROPERTIES

<b>Clonality</b>	Monoclonal
<b>Clone ID</b>	1E1
<b>Concentration</b>	
<b>Conjugation</b>	Unconjugated
<b>Purification</b>	The antibody was affinity-purified from mouse ascites by affinity-chromatography using specific immunogen.
<b>Dilution Range</b>	WB 1:2000-5000
<b>Formulation</b>	Liquid in PBS pH7.4, 0.5% BSA, 0.02% Sodium Azide and 50% Glycerol.
<b>Isotype</b>	IgG1
<b>Storage Instruction</b>	Store at -20°C for up to 1 year from the date of receipt, and avoid repeat freeze-thaw cycles.

### TARGET INFORMATION

<b>Gene ID</b>	
<b>Gene Symbol</b>	
<b>Uniprot ID</b>	
<b>Immunogen</b>	Recombinant Protein of Rabbit IgG (Fc specific, Heavy Chain)
<b>Immunogen Region</b>	
<b>Specificity</b>	The antibody reacts with the Fc portion of rabbit IgG heavy chain but not with the Fab portion of rabbit immunoglobulins. The antibody may cross-react with immunoglobulins from other species.
<b>Immunogen Sequence</b>	



Western blot analysis of Reduced Rabbit IgG, H+L, diluted at 1:10000.

This product is suitable for in-vitro studies under the RESEARCH USE ONLY [RUO] licence. This product must not be used as for diagnostic or other medical purposes.  
St John's Laboratory Ltd, Knowledge Dock Business Centre, University Way, London, E16 2RD | Tel: 0208 223 3081